

# Roger Access Control System

## MCT80M / MCT82M / MCT84M Reader

### Installation Manual

Firmware version: x.1.30.266 and newer

Document version: Rev. F

This document contains minimum information that is necessary for initial setup and installation of the device. The detailed description of configuration parameters and functionalities is specified in respective Operating Manual available at [www.roger.pl](http://www.roger.pl).

## 1. INTRODUCTION

The reader is designed for operation with MC16 access controller (RACS 5 system). Factory new reader is configured with default settings including ID=100 address.

## 2. DEVICE CONFIGURATION

The reader can be configured in regard of various parameters (including address) in order to adapt it to the requirements of specific installation. Device can be configured from VISO v2 management software or RogerVDM utility software.

Note: Remote configuration of device from VISO v2 software is possible only if jumper is placed on MEM contacts (fig. 4). If the jumper is removed then such configuration is blocked. In case of factory new device, jumper is placed on MEM contacts.

### CONFIGURATION WITH VISO V2 PROGRAM

In RACS 5 v2 system the reader can be installed at site without previous configuration. According to AN006 application note, its address and other settings can be configured from VISO v2 management software and during such configuration the access to its service contacts (fig. 4) is not required.

### CONFIGURATION WITH ROGERVDM PROGRAM

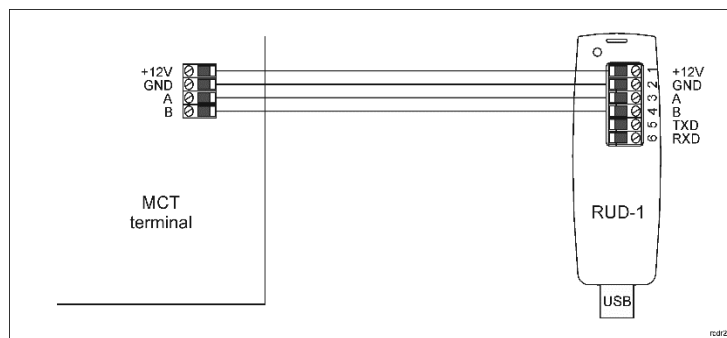


Fig. 1 Connection of MCT reader to RUD-1 interface (configuration)

### Programming procedure:

1. Connect the device to RUD-1 interface (fig. 1) and connect the RUD-1 to computer's USB port.
2. Remove jumper from MEM contacts (fig. 4) if it is placed there.
3. Restart the device (switch power supply off and on or short RST contacts for a moment) and orange LED SYSTEM will pulsate. Then within 5 seconds place jumper on MEM contacts.
4. Start RogerVDM program, select *MCT* device, firmware version, *RS485* communication channel and serial port with RUD-1 interface.
5. Click *Connect*, the program will establish connection and will automatically display *Configuration* tab.
6. Enter unoccupied RS485 address in range of 100-115 and other settings according to requirements of specific installation.
7. Click *Send to Device* to update the configuration of device.
8. Optionally make a backup by clicking *Send to File...* and saving settings to file on disk.
9. Disconnect from RUD-1 interface and leave jumper on MEM contacts to enable further configuration of device from VISO v2 software or

remove jumper from MEM contacts to block such remote configuration.

Note: Do not read any cards nor press reader keypad when reader is configured with RogerVDM.

## MANUAL ADDRESSING

Manual addressing procedure enables configuration of new RS485 address with all other settings unchanged.

### Manual addressing procedure:

1. Remove all connections from A and B lines.
2. Remove jumper from MEM contacts (fig. 4) if it is placed there.
3. Restart the device (switch power supply off and on or short RST contacts for a moment) and orange LED SYSTEM will pulsate. Then within 5 seconds place jumper on MEM contacts.
4. Enter 3 digits of RS485 address in range of 100-115 with keypad or with any MIFARE card.
5. Leave jumper on MEM contacts to enable further configuration of device from VISO v2 software or remove jumper from MEM contacts to block such remote configuration.
6. Restart the device.

Readers without keypad can be addressed with multiple card readings where the N number of readings emulates digit of the address. Three series of readings with any MIFARE proximity card are necessary to set the address. After each series wait for two beeps and proceed with the next digit. Zero digit is emulated with 10 readings.

### Example:

Programming of ID=101 address with card readings:

1. Read card 1 time and wait for two beeps.
2. Read card 10 times and wait for two beeps.
3. Read card 1 time and wait for two beeps.
4. Wait till reader is restarted with the new address.

## MEMORY RESET

Memory reset procedure resets all settings to factory default ones including ID=100 address.

### Memory reset procedure:

1. Remove all connections from A and B lines.
2. Remove jumper from MEM contacts (fig. 4) if it is placed there.
3. Restart the device (switch power supply off and on or short RST contacts for a moment) and orange LED SYSTEM will pulsate. Then within 5 seconds place jumper on MEM contacts.
4. Press [\*] or read any MIFARE card 11 times.
5. Wait till device confirms reset with long acoustic signal.
6. Leave jumper on MEM contacts to enable further configuration of device from VISO v2 software or remove jumper from MEM contacts to block such remote configuration.
7. Restart the device.

## FIRMWARE UPDATE

The firmware of device can be changed to newer or older version. The update requires connection to computer with RUD-1 interface (fig. 2) and starting RogerVDM software. The latest firmware file is available at [www.roger.pl](http://www.roger.pl).

### Firmware update procedure:

1. Connect the device to RUD-1 interface (fig. 2) and connect the RUD-1 to computer's USB port.
2. Place jumper on FDM contacts (fig. 4).
3. Restart the device (switch power supply off and on or short RST contacts for a moment).
4. Start RogerVDM program and in the top menu select *Tools* and then *Update firmware*.
5. In the opened window select device type, serial port with RUD-1 interface and path to main firmware file (\*.hex) and in case of device with keypad also path to additional firmware file (\*.cyacd).
6. Click *Update* to start firmware upload with progress bar in the bottom.
7. When the update is finished, disconnect from RUD-1 interface and remove jumper from FDM contacts. Additionally it is recommended to start memory reset procedure.

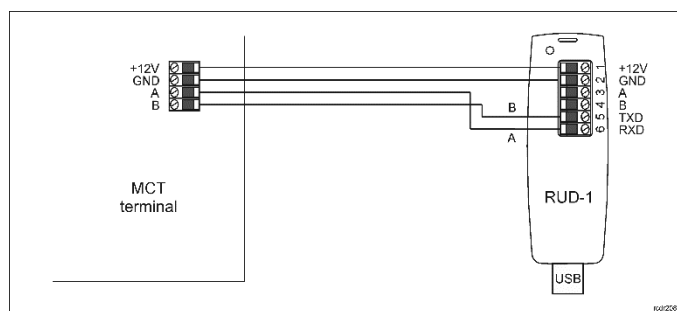


Fig. 2 Connection of MCT reader to RUD-1 interface (firmware update)

### 3. INSTALLATION

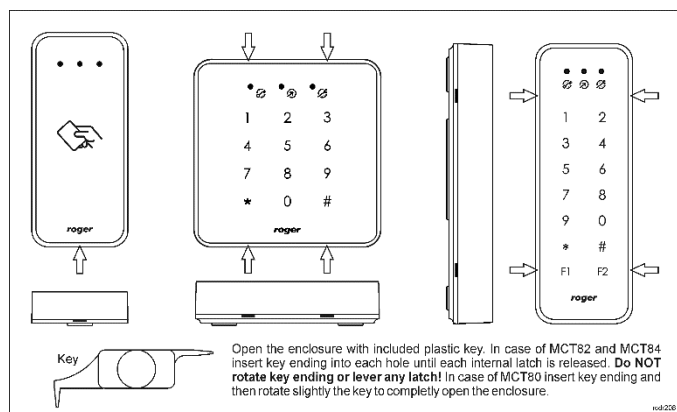


Fig. 3 Enclosure opening

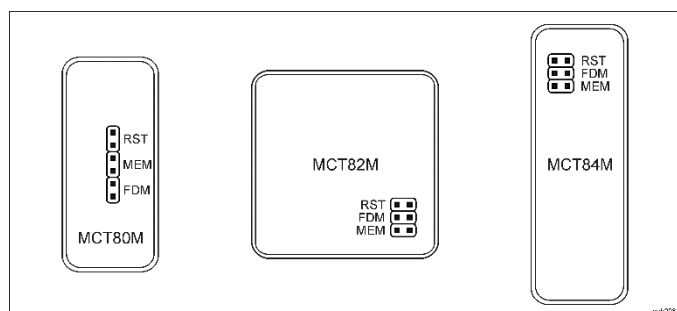


Fig. 4 Service contacts

- In particular, it is not allowed to install the reader in places with high humidity such as saunas, swimming pools, car washes, etc.
- Front panel should be attached in such way as the tamper detector (fig. 4) would firmly press the back panel.
- All electrical connections should be done with disconnected power supply.
- If the device is installed in a place exposed to conductive dust (e.g. metal dust), protect the MEM/RST/FDM pins with insulating mass, e.g. silicone, after installation.
- If the terminal and controller are not supplied from the same PSU then GND terminals of both devices must be connected with any wire.
- Device can be cleaned by means of wet cloth and mild detergent without abrasive components. In particular do not clean with alcohols, solvents, petrol, disinfectants, acids, rust removers, etc. Damages resulting from improper maintenance and usage are not covered by manufacturer warranty.

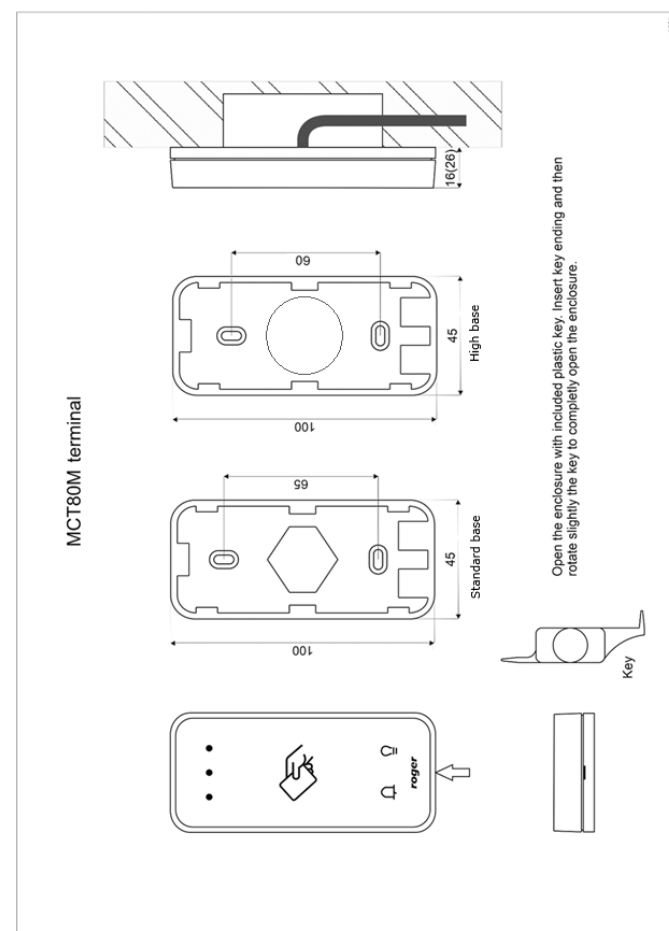


Fig. 5 MCT80M installation

**Table 1. Screw terminals and wires**

Name	Wire colour (MCT80M)	Description
12V	Red	Supply plus
GND	Black	Ground
A	Yellow	RS485 bus, line A
B	Green	RS485 bus, line B
IN1		IN1 input line
IN2		IN2 input line
IN3		IN3 input line
IO1		IO1 output line
IO2		IO2 output line
NC		REL1 relay output (NC)
COM		REL1 relay common terminal
NO		REL1 relay output (NO)

Note: MCT82M enclosure consists of front panel and back panel. New device is assembled with a standard back panel, but additional free of charge, extended back panel is included. This panel can be used when connection cable has to be hidden and no flush mounting box is available.

### Installation guideliness

- The terminal should be mounted on a vertical structure (wall) away from sources of heat and moisture.

Roger sp. z o.o. sp. k.

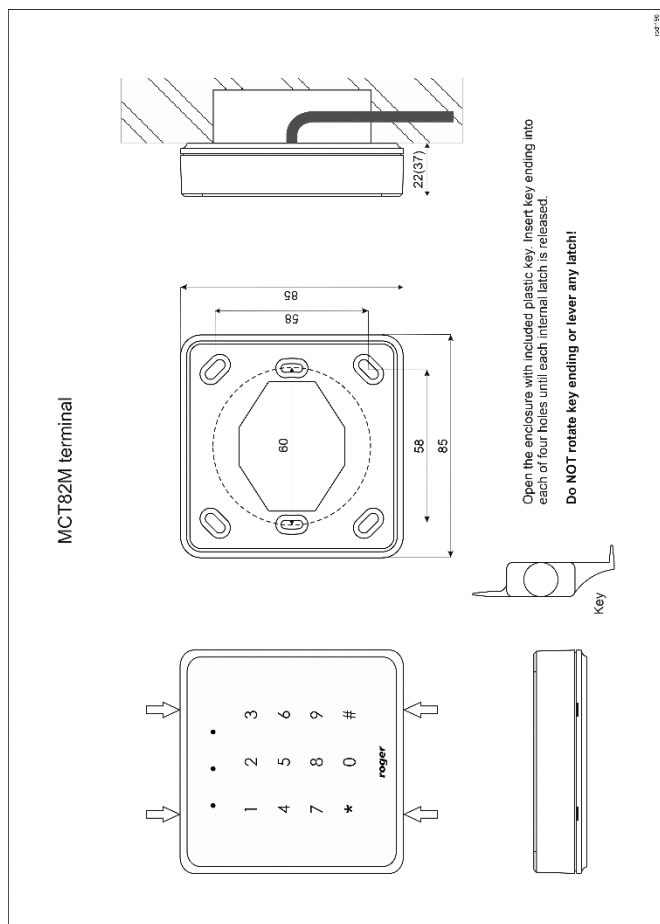


Fig. 6 MCT82M installation

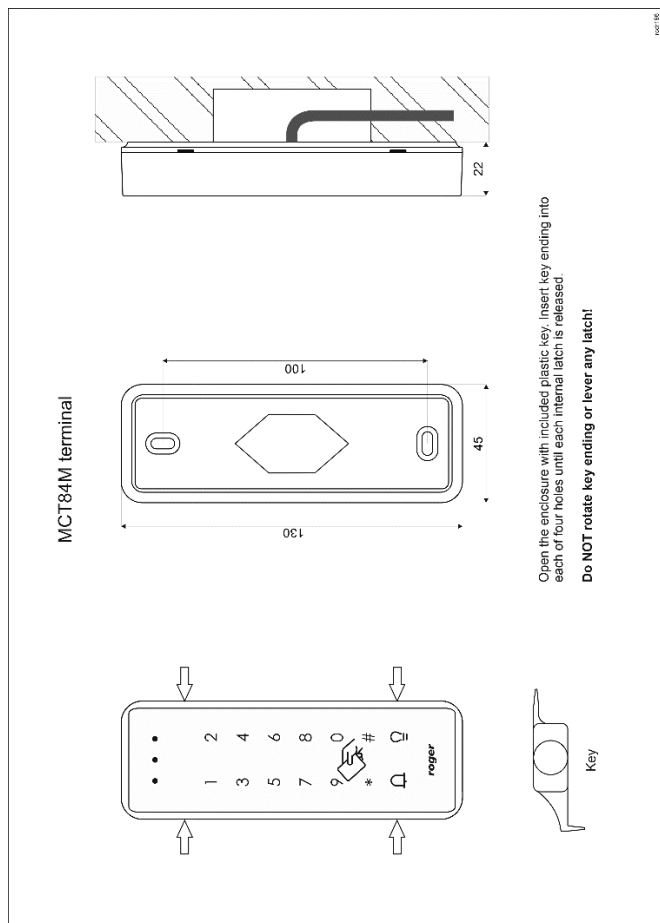


Fig. 7 MCT84M installation

Roger sp. z o.o. sp. k.

## 4. APPENDIX

Table 2. Specification

Supply voltage	Nominal 12VDC, min./max. range 10-15VDC
Current consumption (average)	MCT80M: ~60 mA MCT82M/MCT82M-IO: ~60 mA MCT82M-BK/MCT82M-BK-IO: ~45 mA MCT84M: ~65 mA MCT84M-BK: ~50 mA
Inputs	In IO version: Three parametric inputs (IN1..IN3) internally connected to the power supply plus through a 5.6kΩ resistor. Approx. 3.5V triggering level for NO and NC inputs.
Relay output	In IO version: Relay output (REL1) with single NO/NC contact, 30V/1.5A DC/AC max. load
Transistor outputs	In IO version: Two (IO1, IO2) open collector outputs with pull-up to +12V through a 15kΩ resistor, 15VDC/150mA max. load
Tamper protection	Enclosure opening reported to access controller
Proximity cards	13.56MHz Mifare® Ultralight, Classic
Reading range	Up to 7 cm
Distance	1200m maximal cable length for RS485 bus between controller and reader
IP	MCT80M series: IP65 MCT82M/MCT84M series : IP30
IK	MCT80M: IK06 MCT82M/MCT82M-IO: IK06 MCT82M-BK/MCT82M-BK-IO: IK07 MCT84M/MCT84M-BK: IK05
Environmental class (according to EN 50133-1)	MCT80M: Class IV, outdoor general conditions, temperature: -25°C to +60°C, relative humidity: 10 to 95% (no condensation) MCT82M/MCT84M series: Class II, indoor general conditions, temperature: -10°C to +50°C, relative humidity: 10 to 95% (no condensation)
Dimensions HWD	MCT80M series: 100x45x16 mm MCT82M series: 85x85x22 mm MCT84M series: 130x45x22 mm
Weight	MCT80M: ~100g MCT82M series: ~100g MCT84M series: ~100g
Certificates	CE, RoHS
Manufacturer's warranty	36 months

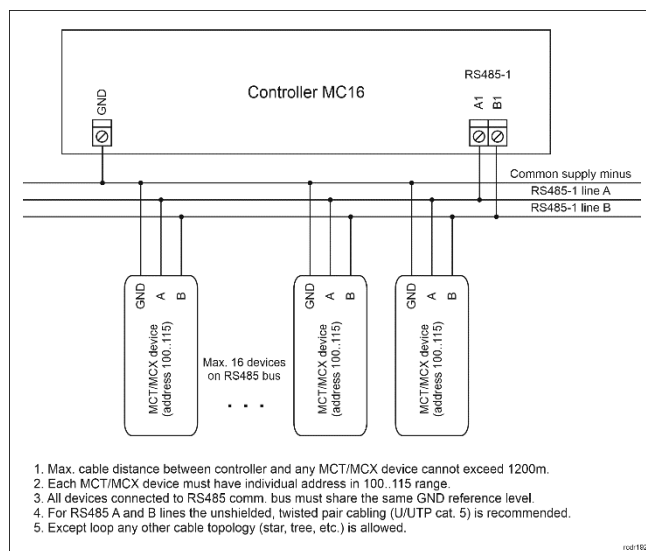


Fig. 8 Connection of readers and expanders to MC16 access controller

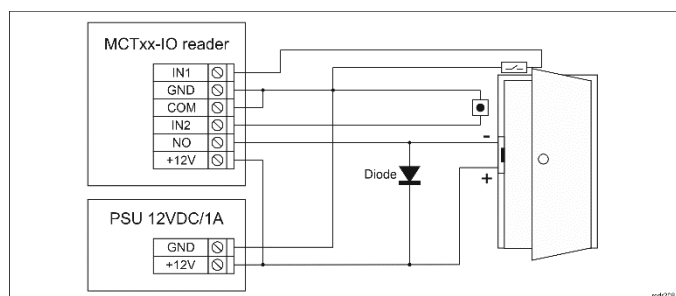


Fig. 9 Connection of door lock, door contact and exit button to MCTxx-IO reader

Table 8. Ordering information	
MCT80M	Outdoor Mifare® Classic access terminal
MCT82M-BK	Mifare® Classic access terminal
MCT82M-BK-IO	Mifare® Classic access terminal; on-board I/Os
MCT82M	Mifare® Classic access terminal with keypad
MCT82M-IO	Mifare® Classic access terminal with keypad; on-board I/Os
MCT84M-BK	Mifare® Classic access terminal
MCT84M	Mifare® Classic access terminal with keypad
RUD-1	Portable USB-RS485 communication interface dedicated to ROGER access control devices

Table 9. Product history		
Version	Date	Description
MCT80M v1.0	09/2018	The first commercial version of product
MCT82M/MCT82M-BK v1.0	03/2015	The first commercial version of product

MCT84M/MCT84M-BK v1.0	03/2015	The first commercial version of product
MCT82M-BK v2.0	07/2019	Door bell button added to the front panel
MCT82M-BK v3.0	12/2021	Door bell button removed from the front panel

	<p>This symbol placed on a product or packaging indicates that the product should not be disposed of with other wastes as this may have a negative impact on the environment and health. The user is obliged to deliver equipment to the designated collection points of electric and electronic waste. For detailed information on recycling, contact your local authorities, waste disposal company or point of purchase. Separate collection and recycling of this type of waste contributes to the protection of the natural resources and is safe to health and the environment. Weight of the equipment is specified in the document.</p>
--	---

This document is subject to the Terms of Use in the current version published on the website [www.roger.pl](http://www.roger.pl)

**Contact:**  
**Roger Sp. z o. o. sp. k.**  
**82-400 Sztum**  
**Gościszewo 59**  
**Tel.: +48 55 272 0132**  
**Fax: +48 55 272 0133**  
**Tech. support: +48 55 267 0126**  
**E-mail: [support@roger.pl](mailto:support@roger.pl)**  
**Web: [www.roger.pl](http://www.roger.pl)**