

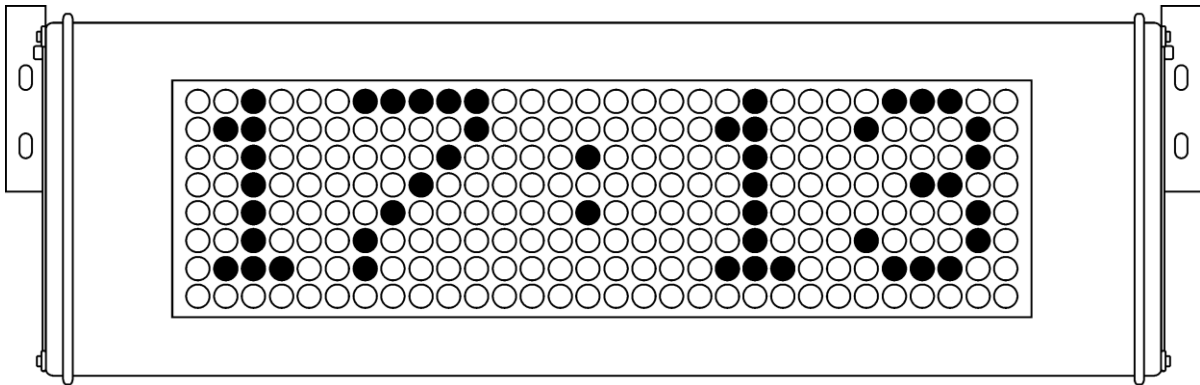
Roger Access Control System

ASCD-1 Operating manual

Firmware version: 1.1.4.19 or newer

Hardware version: 1.0

Document version: Rev. E



THIS DOCUMENT IS SUBJECT TO THE TERMS OF USE IN THE CURRENT VERSION PUBLISHED ON THE WEBSITE WWW.ROGER.PL. THE MANUFACTURER RESERVES THE RIGHT TO MAKE CHANGES TO THE PRODUCT WITHOUT PRIOR NOTICE. © ROGER SP. Z O. O. SP.K. ALL RIGHTS RESERVED.

1. DESCRIPTION AND SPECIFICATION

ASCD-1 is five segment LED matrix display. In RACS 4, the device can display system time in 24h format while in RACS 5 it can additionally display system text messages with maximal length of 32 characters. When the text is longer than matrix (5 characters) then it is smoothly scrolled. Alternatively the ASCD-1 can be used beyond RACS systems as a standalone clock using internal RTC or as a display presenting received text messages. The device can additionally display ambient temperature using internal sensor. The device is equipped with CR2032 type battery in order to maintain clock operation and internal settings in case of power supply shortage. The enclosure of ASCD-1 is made of aluminium profile with powder coating and universal mounting system which enables adjustment of its inclination. The enclosure provides protection against ingress therefore it can be used indoors and outdoors if protected against direct rainfall.

Note: ASCD-1 with firmware older than 1.1.4 cannot be applied in RACS 5 system. Contact Roger company when firmware upgrade is necessary.

Table 1. Specification	
Nominal supply voltage	12VDC
Nominal supply current	80mA
RS485 distance	1200m
Environment	Outdoor location protected from the precipitation and direct sun light, temp.: -25°C- +60°C, relative humidity: 10 to 75% (no condensation)
IP code	IP45
Character height	50 mm
Dimensions HxWxD	110 x 305 x 55mm
Weight	810g
Compliance	CE; RoHS

2. INSTALLATION

2.1 Terminals and connection diagrams

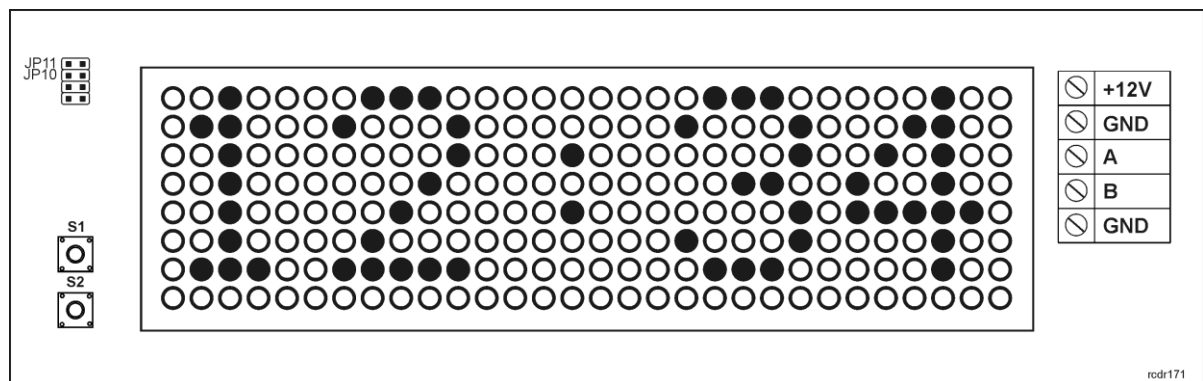


Fig. 1 ASCD-1 display front view

Table 2. ASCD-1 terminals			
Terminal	Description	Terminal	Description
+12V	+12 VDC power supply	B	RS485 communication bus
GND	Ground	GND	Ground
A	RS485 communication bus		

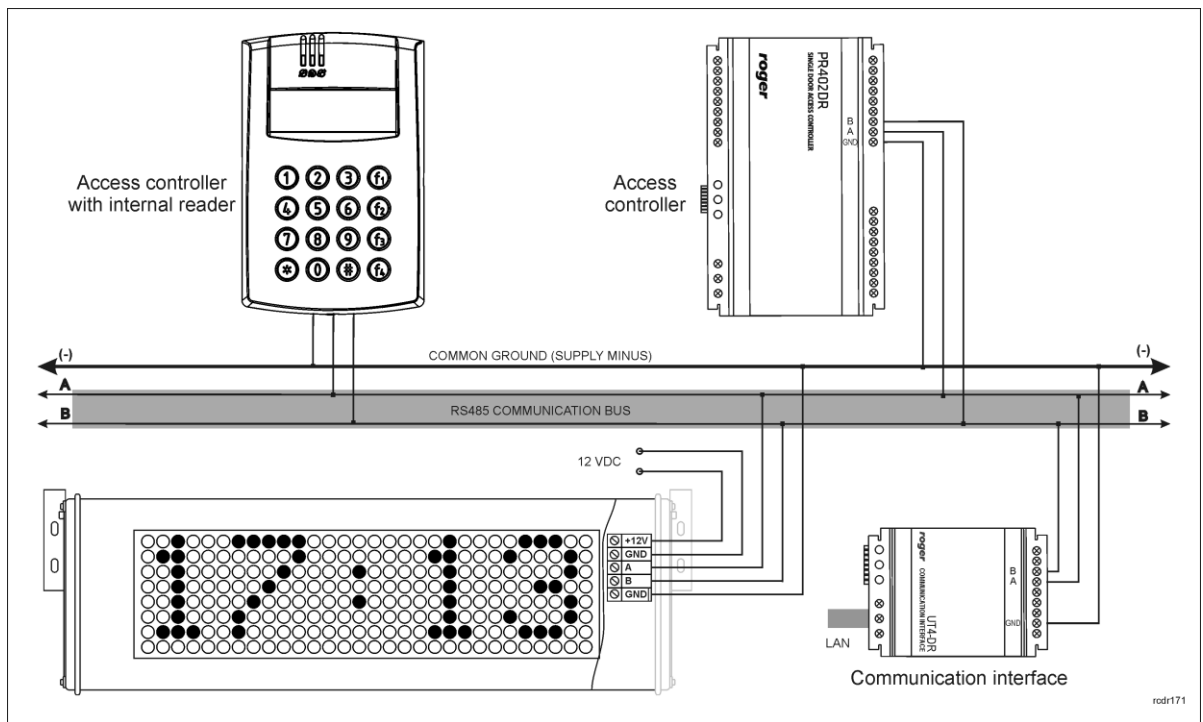


Fig. 2 Example of ASCD-1 connection in RACS 4

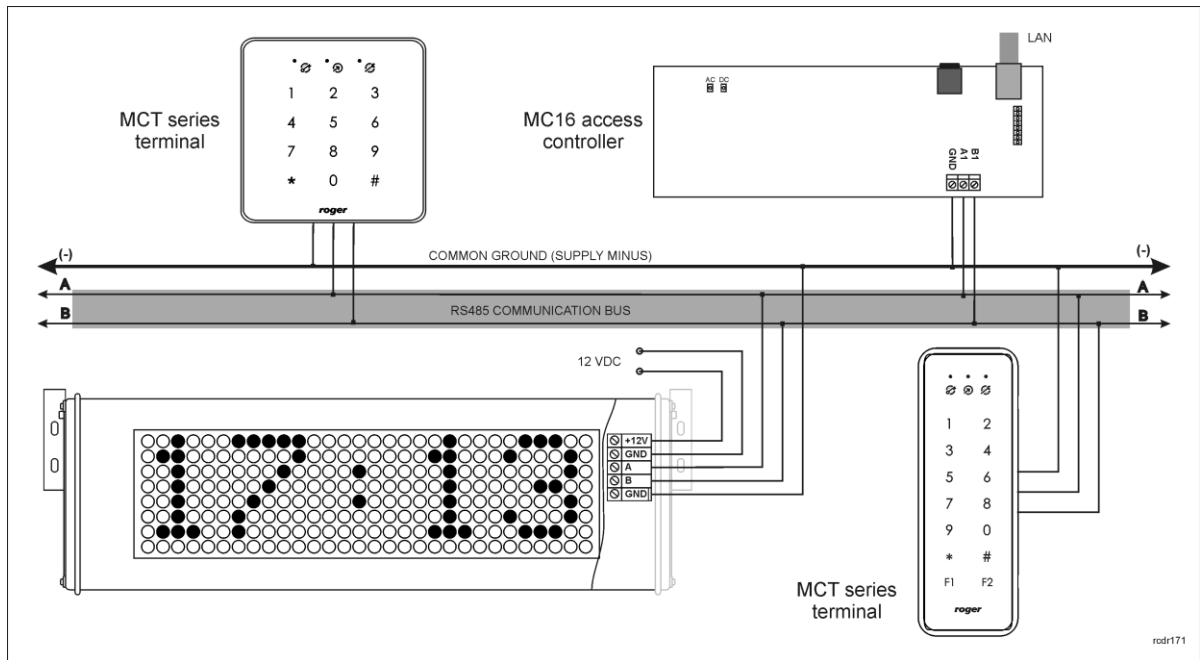


Fig. 3 Example of ASCD-1 connection in RACS 5

2.2 Power supply

ASCD-1 display requires 12VDC nominal power supply. The supply can be provided by PS20 PSU (Roger) or AUX output of controller supplied with 18VAC. ASCD-1 is equipped with internal CR2032 type battery in order to maintain clock operation and internal settings in case of power supply shortage.

Note: In order to get access to screw terminals, it is necessary to unscrew both bolts at the right side of the enclosure by means of driver with T10 bit (torx) and then to pull out the board from ASCD-1 enclosure.

2.3 RS485 communication bus

The RS485 bus consists of two signal lines A and B. In the RACS 4 and RACS 5 systems any topology can be used (star, tree or any combination of them, except for loop) in order to connect controllers into network (RACS 4) or connect peripheral devices to MC16 access controller (RACS 5). ASCD-1 in standalone mode uses internal clock and does not require connection to RS485 bus. In case of operation within access control system, the connection according to fig. 2 or fig. 3 is required.

In most cases RS485 communication works with any cable type (standard telephone cable, shielded or unshielded twisted pair etc.) but the recommended cable is unshielded, twisted pair U/UTP cat.5. Shielded cables should be limited to installations subject to strong electromagnetic interferences. The RS485 communication standard guarantees proper communication in a distance of up to 1200 meters as well as high resistance to interferences.

2.4 Installation guidelines

- Install devices in such way as to ensure access to terminals and jumpers.
- In order to ensure tightness of enclosure it is recommended to insert single cable with several wires into ASCD-1 enclosure as to provide power supply and RS485 communication.
- All electric cables must be connected to devices with disconnected power supply.
- All devices on RS485 bus (controllers, readers, expanders, etc) should have common supply minus (GND). In order to ensure this, all the GND terminals from various power supply units used in the system (including access controllers with built-in power modules) should be

- connected with each other using separate wire. Alternatively, the common supply minus (GND) of the entire system can be earthed however in one, arbitrary selected, point only.
- The enclosure of ASCD-1 is opened by means of driver with T10 (torx) bit and the inclination of ASCD-1 is adjusted by means of driver with hex bit no.3.
- ASCD-1 can be installed outdoors but it should be protected by means of roof against direct rainfall and sunlight.
- The electronic module contains electronic components sensitive to ESD. Activities involving contact with the electronic module may only be performed by a person free from electrostatic charge.
- The installation may only be performed by a qualified person with appropriate permits and authorizations for connecting and intervening in low-voltage networks.

3. CONFIGURATION

The device is configured manually with S1 and S1 programming buttons on ASCD-1 board or with RogerVDM software after connection to computer by means of RUD-1 communication interface. In case of operation in RACS 5 system additional high level configuration with VISO software is necessary.

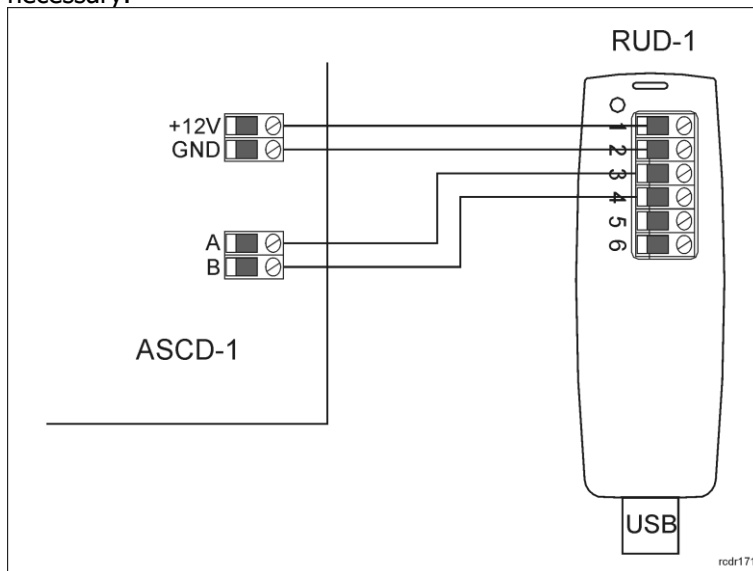


Fig. 4 Connection of ASCD-1 to RUD-1 interface

3.1 Operation in RACS 4

In RACS 4 system, the ASCD-1 automatically receives time settings by means of RS485 communication bus from the system and in case of any difference the time is adjusted. In order to ensure proper operation it is necessary to connect the device to RS485 bus of RACS 4 system with:

- at least single PRxx2 series controller or
- CPR32 type network controller or
- PR Master software continuously operating in Online Monitoring mode

If the ASCD-1 is supposed to display system time then configuration is not necessary and it can operate with default settings. The display is passive receiver connected to RS485 bus and no addressing in RACS 4 system is required. The ASCD-1 can additionally and alternately display date and/or ambient temperature.

Date and temperature configuration with programming buttons

- Open the enclosure by unscrewing both bolts on the right side of display using driver with T10 (torx) bit and pull out the board.
- Press S1 button (fig. 1) for a few seconds with power supply connected till configuration mode is started.
- Press S1 button several times till D: N text is displayed.

- Change from D: N to D: Y with S2 button in order to display time and date alternately.
- Press S1 button to display T: N text.
- Change from T: N to T: Y with S2 button in order to display time and temperature alternately.
- Press S1 button several times till END text is displayed in order to finish the configuration.

Date and temperature configuration with RogerVDM software

- Open the enclosure by unscrewing both bolts on the right side of display using driver with T10 (torx) bit and pull out the board.
- Connect the device to RUD-1 interface according to fig 4 and the RUD-1 interface to computer's USB port.
- Press S1 and S2 buttons on ASCD-1 board for a few seconds till –CFG- text is displayed.
- In RogerVDM program select device *ASCD-1*, firmware version *v1.1*, communication channel *RS485* ad serial port with RUD-1 interface.
- Click *Connect* button and the program shall establish connection with the device and display its configuration parameters.
- For options *Show date* and/or *Show temperature* select *[1]: Yes*.
- Click *Send to Device* button and RogerVDM will upload new settings to the device.
- Disconnect device from RUD-1 interface.

3.2 Operation in RACS 5

In RACS 5 system, the ASCD-1 display can be operated as RTC or LCD offering different functionalities in each mode. In RTC mode the device displays time synchronized with the MC16 access controller and optionally date and ambient temperature while in LCD mode the device displays text information from access controller such as time, date, T&A mode, arming status, etc. Text longer than 5 segment matrix is smoothly scrolled. Essential parameters of low level configuration can be configured manually with S1 and S2 programming buttons. All low level settings including maximal number of characters, scrolling speed, RS485 bus encryption and object comments can be configured only with RogerVDM software. High level configuration in regard of device functional logic is made with VISO software after connection to MC16 access controller.

Low level configuration with programming buttons

- Open the enclosure by unscrewing both bolts on the right side of display using driver with T10 (torx) bit and pull out the board.
- Press S1 button (fig. 1) for a few seconds with power supply connected till configuration mode is started.
- Press S1 button several times till D: N text is displayed. Optionally change into D: Y with S2 button in order to display time and date alternately.
- Press S1 button to display T: N text. Optionally change into T: Y with S2 button in order to display time and temperature alternately.
- Press S1 button to display E100 text. Change default ID=100 address with S2 button into any unoccupied address on RS485 bus in range of 100-115. Device will use this address to communicate with MC16 controller.
- Press S1 button to display ASCD-1 working mode. Depending on planned application of the device select RTC or LCD mode with S2 button.
- Press S1 button to display END text and finish the configuration.

Low level configuration with RogerVDM software

- Open the enclosure by unscrewing both bolts on the right side of display using driver with T10 (torx) bit and pull out the board.
- Connect the device to RUD-1 interface according to fig 4 and the RUD-1 interface to computer's USB port.
- Press S1 and S2 buttons on ASCD-1 board for a few seconds till –CFG- text is displayed.
- In RogerVDM program select device *ASCD-1*, firmware version *v1.1*, communication channel *RS485* ad serial port with RUD-1 interface.
- Click *Connect* button and the program shall establish connection with the device and display its configuration parameters.
- Select *RTC* or *LCD* mode depending on planned application of the device.

- Select any unoccupied RS485 address in range of 100-115. Device will use this address to communicate with MC16 controller.
- Optionally in case of LCD mode define such settings as *Maximal text length* and *Scrolling speed*.
- Optionally configure encryption on RS485 bus and alternate displaying of date and/or ambient temperature.
- Optionally enter comments for ASCD-1 objects in order to facilitate their identification in VISO software.
- Click *Send to Device* button and RogerVDM will upload new settings to the device.
- Disconnect device from RUD-1 interface.

High level configuration with VISO software

After low level configuration with programming buttons or RogerVDM software it is necessary to make high level configuration with VISO software in regard of functional logic of device in RACS 5 system.

- Connect the device to access controller according to fig. 3
- In VISO navigation tree right click access controller, select *Commands* and then *Run Device Discovery* (more information on RACS 5 quick start is given in AN006 application note which is available at www.roger.pl)
- In the newly opened window detect devices on controller's RS485 bus. Device in RTC mode is now ready for operation and does not require further configuration.
- If device is in LCD mode then in the navigation tree of VISO software double click *Displays commands* within particular controller.
- In the new window click *Add* button and indicate ASCD-1 as an object. Close the window with *OK* button.
- In the bottom, in the *Lines* tab click *Edit* button and indicate what text shall be displayed by ASCD-1.
- Upload settings to controller.

3.3 Standalone operation

In standalone mode, the ASCD-1 does not synchronize with any master device. Time and optionally date are displayed based on internal real time clock. Additionally the internal sensor can be used to measure and display ambient temperature.

Configuration for standalone operation

- Open the enclosure by unscrewing both bolts on the right side of display using driver with T10 (torx) bit and pull out the board.
- Press S1 button (fig. 1) for a few seconds with power supply connected till configuration mode is started.
- Configure minutes with S2 button.
- Press S1 button and configure hour with S2 button.
- Press S1 button and configure year with S2 button.
- Press S1 button and configure month with S2 button.
- Press S1 button and configure day with S2 button.
- Press S1 and with S2 button select if only time is displayed (D: N) or time and date are displayed alternately (D: Y).
- Press S1 and with S2 button select if only time is displayed (T: N) or time and ambient temperature are displayed alternately (T: Y).
- Press S1 button twice skipping RS485 address configuration and select RTC mode with S2 button.
- Press S1 button to display END text and finish the configuration.

3.4 Operation in third party systems

ASCD-1 can be used to display text uploaded through RS485 bus. RUD-1 or UT-2USB communication interfaces can be used to upload string directly from computer with any RS232 terminal installed (e.g Termite). The parameters of communication are 9600bps, 8N1, handshake. ASCII (20h..7Eh) characters and Polish characters in UTF-8 format are accepted. Any string uploaded to ASCD-1 must be finished with CR LF characters (0Dh, 0Ah). When the string is

correctly received and displayed then ASCD-1 replies with OK text (4Fh, 4Bh). When the message is longer than 5 segment matrix then it is smoothly scrolled. The maximal length of string is 32 characters. Maximal number of characters can be limited and scrolling speed configured with RogerVDM software and RUD-1 interface. The ASCD-1 can be used to display text only if in LCD mode and with jumper placed on JP10 pins (fig. 1). The device is ready for operation when it displays Terminal text.

3.5 Memory reset

- Open the enclosure by unscrewing both bolts on the right side of display using driver with T10 (torx) bit and pull out the board.
- Place jumper on JP11 pins (fig. 1).
- Restart device by switching power supply off and on.
- Devices shall make short sound and shall display RESET text.
- Remove the jumper so the device could operate with default factory settings.

3.6 Configuration error

When started, the ASCD-1 reads its settings from memory. In case of error (CfgEr text) make low level configuration or memory reset to restore the device.

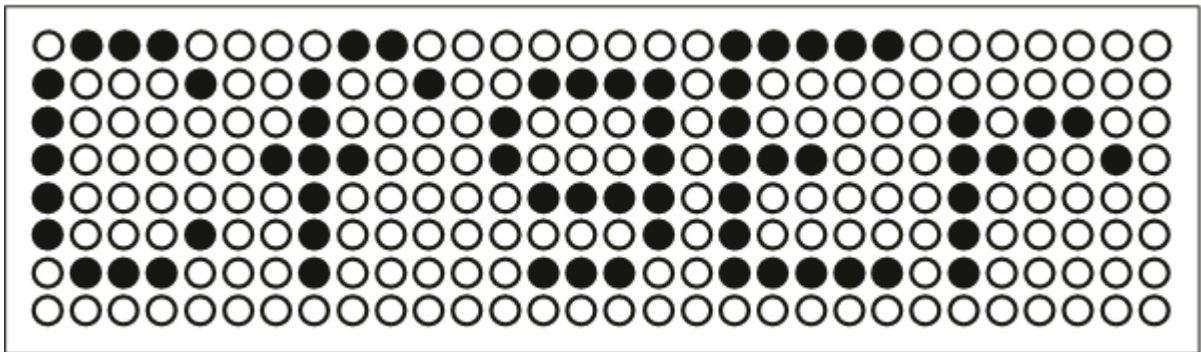


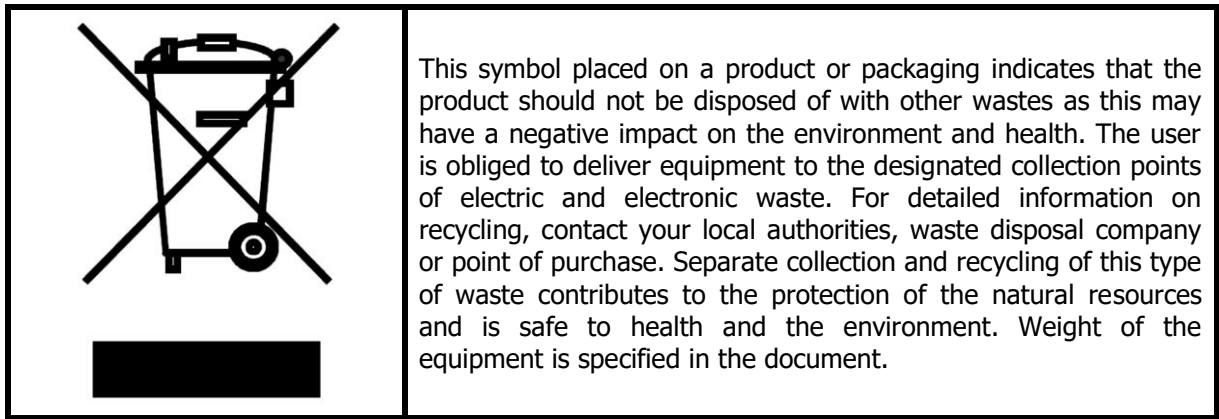
Fig. 5 Configuration error

4. ORDERING INFORMATION

Table 3. Ordering information	
ASCD-1	Outdoor LED matrix display with clock

5. PRODUCT HISTORY

Table 4. Product history		
Product version	Released	Description
ASCD-1 v.1.0	03/2013	The first commercial version of the product

**Contact:**

Roger sp. z o.o. sp.k.
82-400 Sztum

Gościszewo 59

Tel.: +48 55 272 0132

Fax: +48 55 272 0133

Tech. support: +48 55 267 0126

E-mail: biuro@roger.pl

Web: www.roger.pl