

# Roger Access Control System 5 v 2

Application note no. 032

Document version: Rev. A

## Card designing and printing

Note: This document refers to RACS 5 v2.0.8 or higher

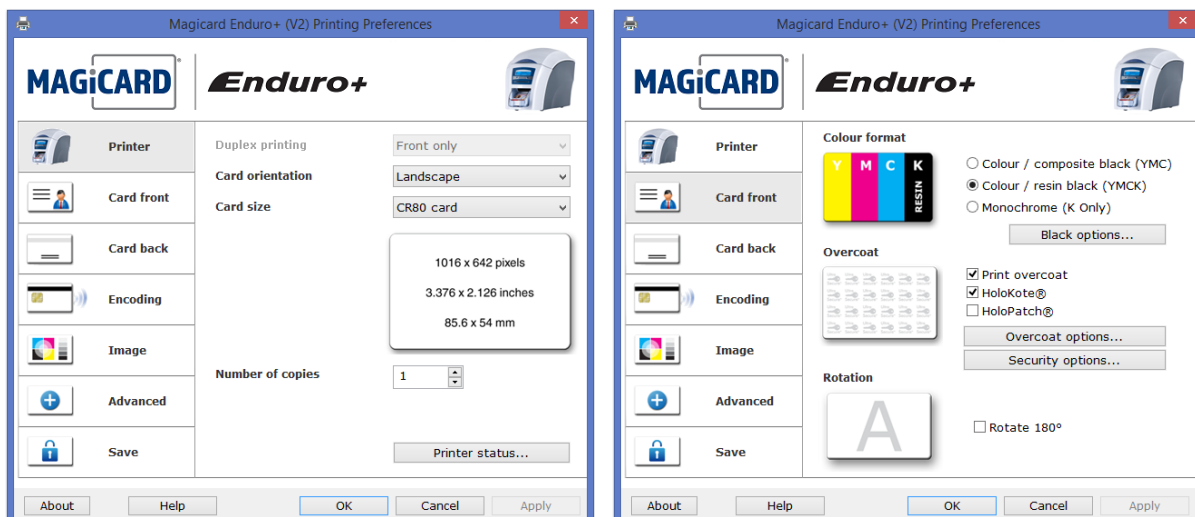
### Introduction

VISO software enables card templates designing and printing on proximity cards conforming with format ID-1 (85,6 x 54 mm) of ISO/IEC 7810 standard. The other commonly used name for this type of cards is CR80. VISO software can operate with card printers of such manufacturers as for example Zebra, Magicard or Datacard. In particular following models were tested during implementation but RACS 5 is not limited to these devices and other models of card printers can also be applied:

- Zebra ZXP1 and Zebra P310
- Magicard Pronto
- Datacard SD160

### Card printer configuration

Install your card printer on computer according to manufacturer guidelines. Configure the printer in regard of card size, card orientation and printing options. Typical settings for Magicard printer are shown below.



## Card template

### Card template creating


The template enables to design layout with custom graphic elements for printing. Multiple card templates can be configured and selected in VISO software according to individual requirements. In order to create a template:

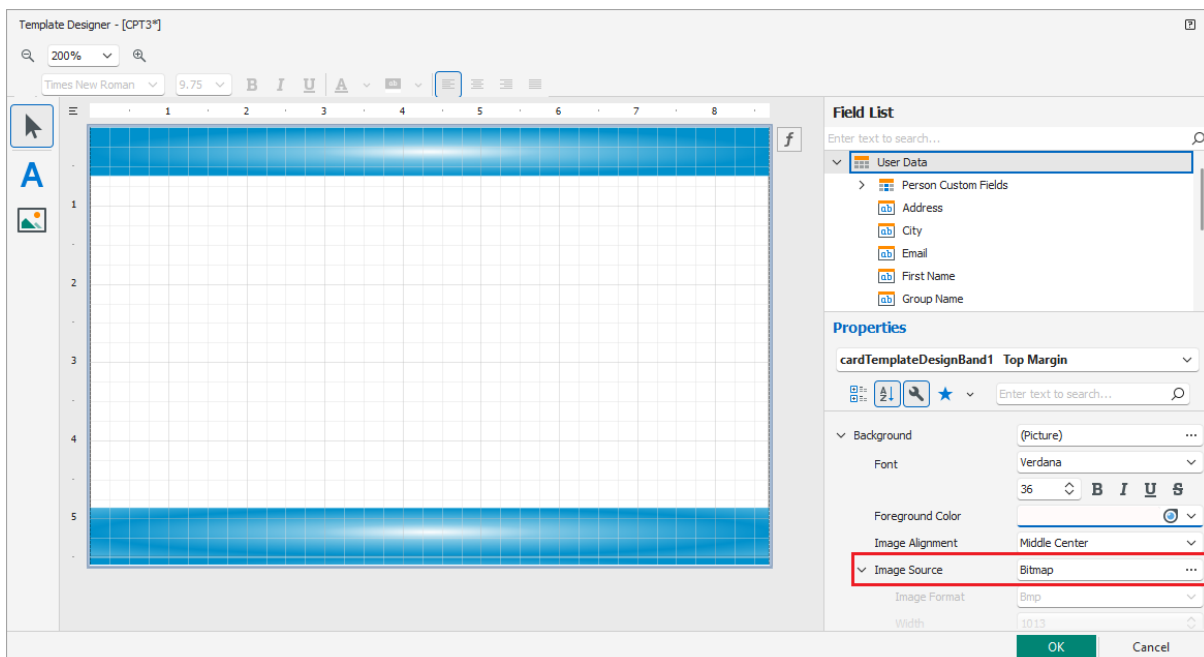
- In the top menu of VISO software select *Tools* command and then *Card Printing Templates*.
- In the opened window select *Add* button, name the template and select card orientation (horizontal or vertical).
- In the bottom select *Template Designer* button.
- In the opened window design the template selecting required elements.

### Card template designing


The template can include constant content elements such as background, logo, text, etc. and variable content elements which are individual for selected users i.e. first and last name, group, etc.


### Background

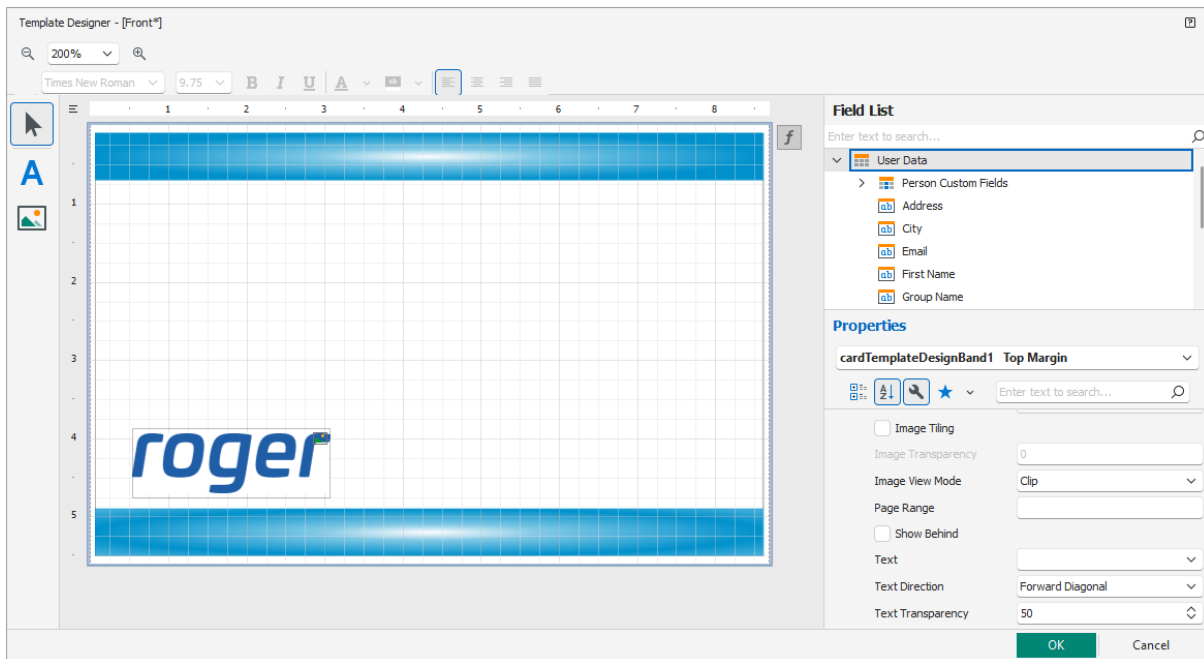
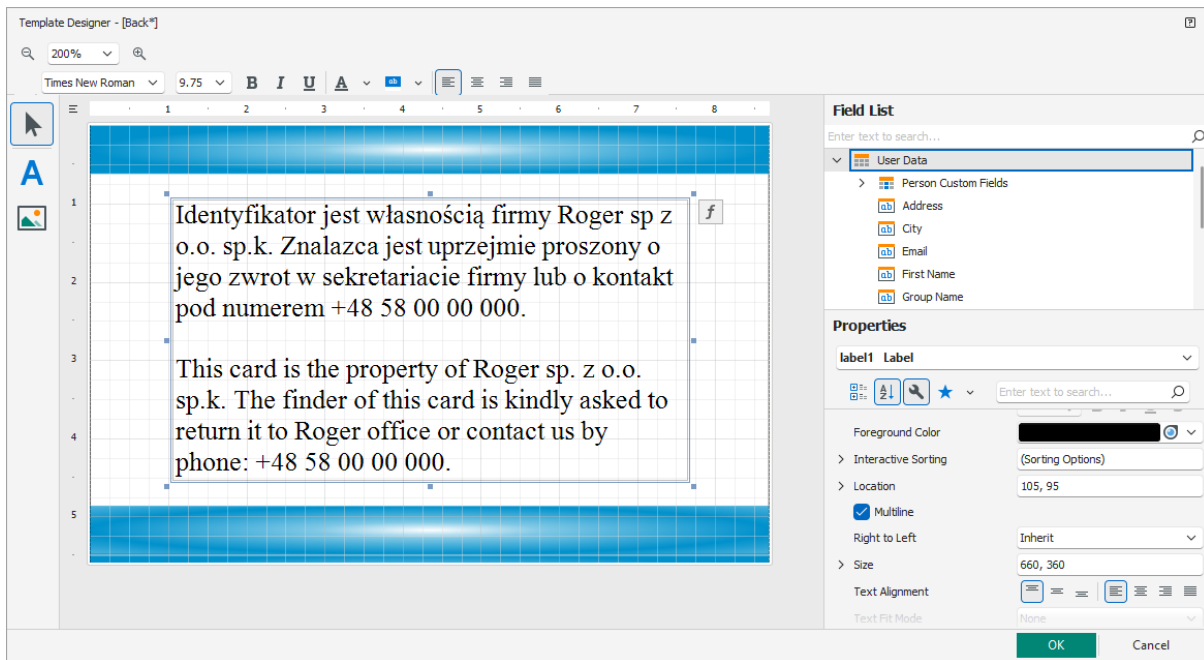
Draw a picture in any graphic design software and save it in one of popular formats such as \*.bmp, \*.jpg, \*.png, etc. Click template area, select , expand *Background* and then in *Image Source* indicate your picture for a background. Other parameters such as transparency, alignment etc. can also be configured.



### Constant content elements

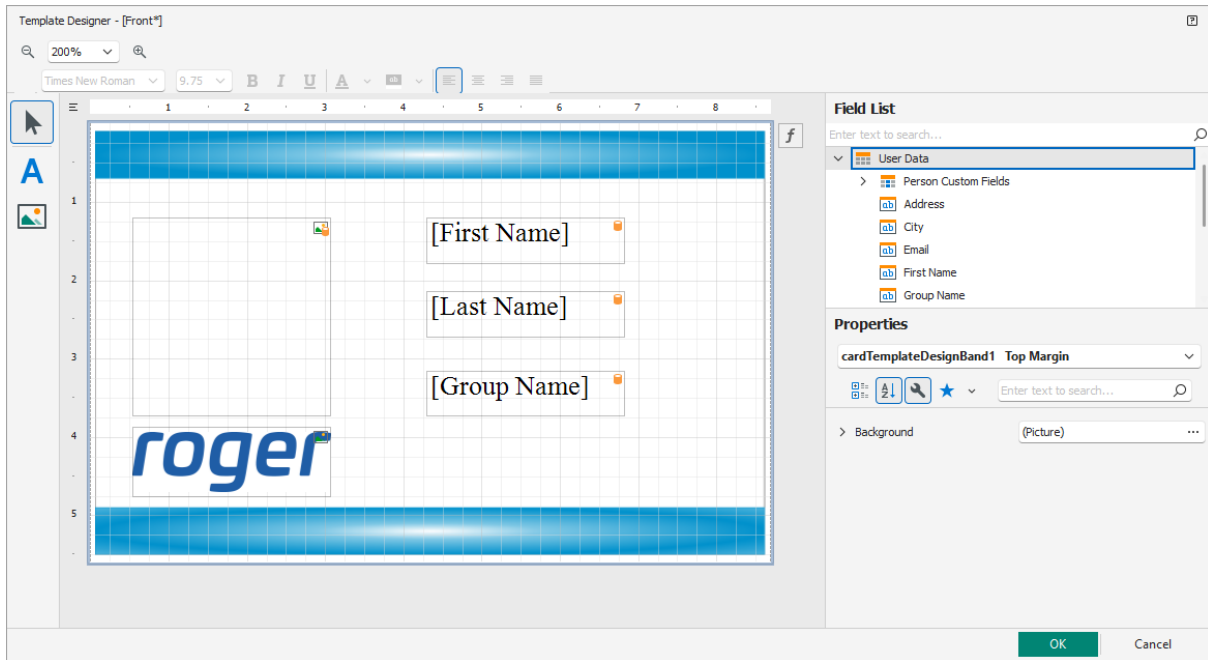
In case of constant text select , click in template area and enter your text. Additional formatting in regard of size, fonts, alignment, background, borders, location etc. can be defined in *Properties* area. The total template area is 850 x 540. The 0,0 point of coordinate system is in the top left corner and the location of each element is defined for its top left corner.

In case of constant image select , click in template area and indicate previously prepared image file in *Image Source* field. Additional formatting can be done in *Properties* area. The image can be centred, stretched, zoomed, etc.



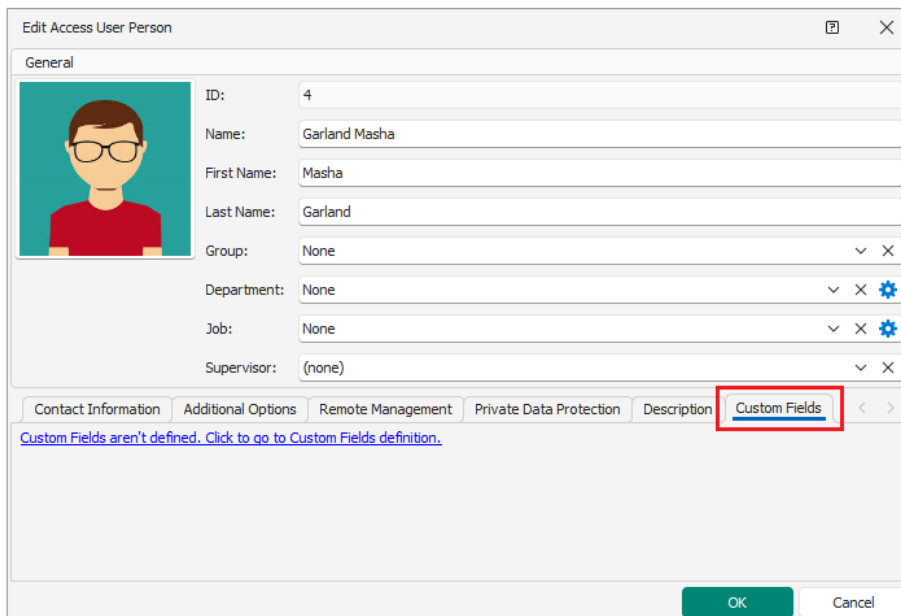
### Predefined variable content elements

Variable elements change their content based on the user for whom card is printed. The examples of such elements are first and last names, photo (preferable in 1:1 proportions), etc. In order to place first name on card template drag and drop *First name* element from *Field List* area. When card is printed then variable elements are filled with data entered when user is created/edited.

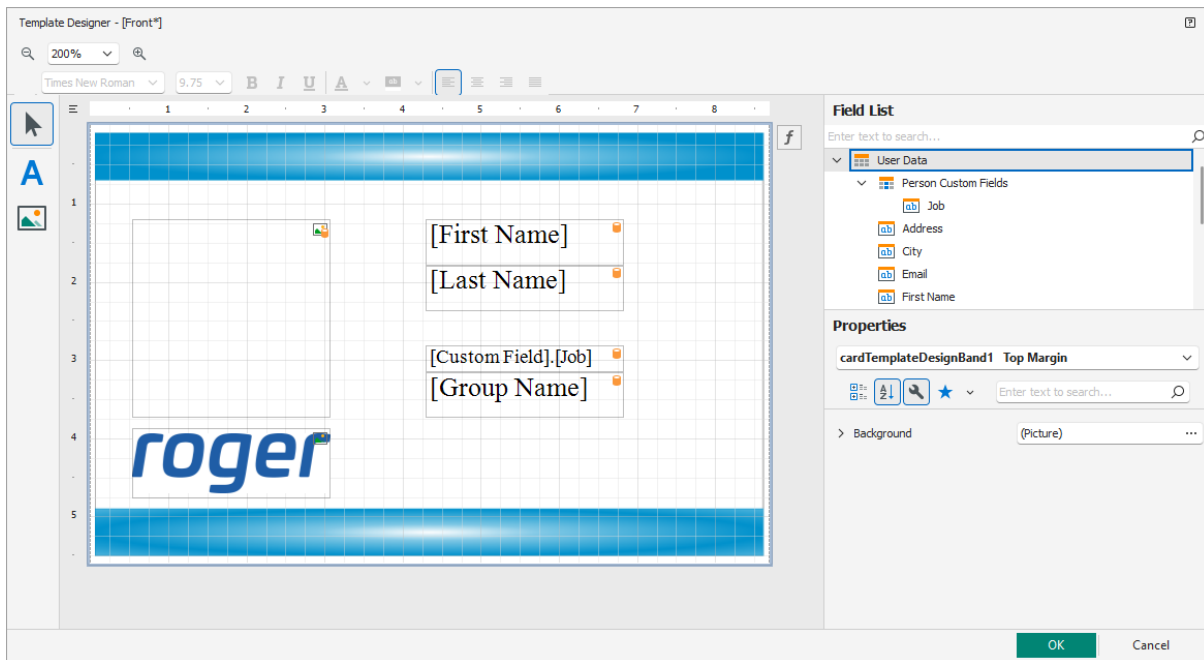


### Customized variable content elements

Customized fields such as for example job can be defined and filled for Access User Persons in VISO software. Such fields are defined by selection of *Tools* command in the top menu of VISO software and then *Person Custom Fields* icon. The field can be filled in the properties of user in *Custom Fields* tab.



Customized variable elements can be applied in card template when *Person Custom Fields* command is expanded in *Field List* area and selected elements are dragged and dropped into template area.



## Card printing

Cards can be printed for all types of users i.e. Persons, Visitors and Assets. In order to print card template for particular user:

- In the top menu of VISO software select *Configuration* command and then *Access User Persons*.
- In the opened window select any user and then *Print Card* command.
- In the next window select one of previously created templates and then *OK* button.
- In the opened window select available printer and confirm with *OK* button.

Cards can be also printed within such wizards as Add Person Online and Edit Person Online which can be accessed by selection of Wizards in the top menu of VISO software.

**Contact:**  
**Roger sp. z o.o. sp.k.**  
**82-400 Sztum**  
**Gościszewo 59**  
**Tel.: +48 55 272 0132**  
**Fax: +48 55 272 0133**  
**Tech. support.: +48 55 267 0126**  
**E-mail: [support@roger.pl](mailto:support@roger.pl)**  
**Web: [www.roger.pl](http://www.roger.pl)**