

Roger Access Control System 5 v 2

Application note no. 054

Document version: Rev. A

Cerberus (SIEMENS) integration

Note: This document refers to RACS 5 v2.0.6 or higher

Introduction

RACS 5 system enables software integration with fire alarm panels of Cerberus series from SIEMENS company. The integration enables to:

- Monitor and locate states from fire alarm system using Maps and Monitors in association with CCTV system. It concerns such states as:
 - fire alarms
 - activation/deactivation of inputs and outputs (e.g. smoke vents)
 - failures
- Keep maintenance log based on Event Log and possibly using Notes.


The integration is mainly dedicated to be used with VISO SMS system which enables monitoring and visualization of various security systems as explained in AN055 application note. Fire alarm cancelling, resetting, etc must be performed from the level of the fire panel. The integration concerns Cerberus series panels e.g. FC721 (firmware version 70.28.58) if such panels can be operated with BACNet protocol. It is also necessary to apply valid license in the VISO software.

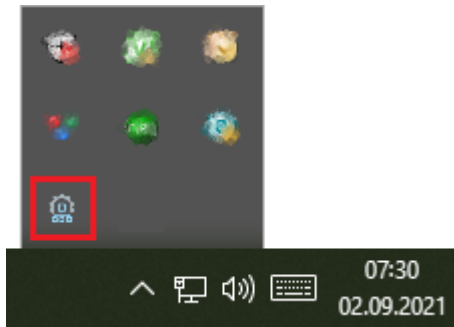
Preliminary configuration of RACS 5

In order to conduct preliminary configuration of RACS 5:

- Install VISO software and create database according to AN006 application note.
- Install RogerSVC software and select not only Communication Server but also License Server and Virtual Controllers Server. If servers are supposed to be operated on individual computers then install RogerSVC on each computer selecting required servers.

Note: If License Server and Virtual Controllers Server are supposed to be operated on individual computers then during installation of Virtual Controllers Server, the License Server must be deselected. Only in such case it will be possible to indicate external License Server when Virtual Controllers Server is configured.

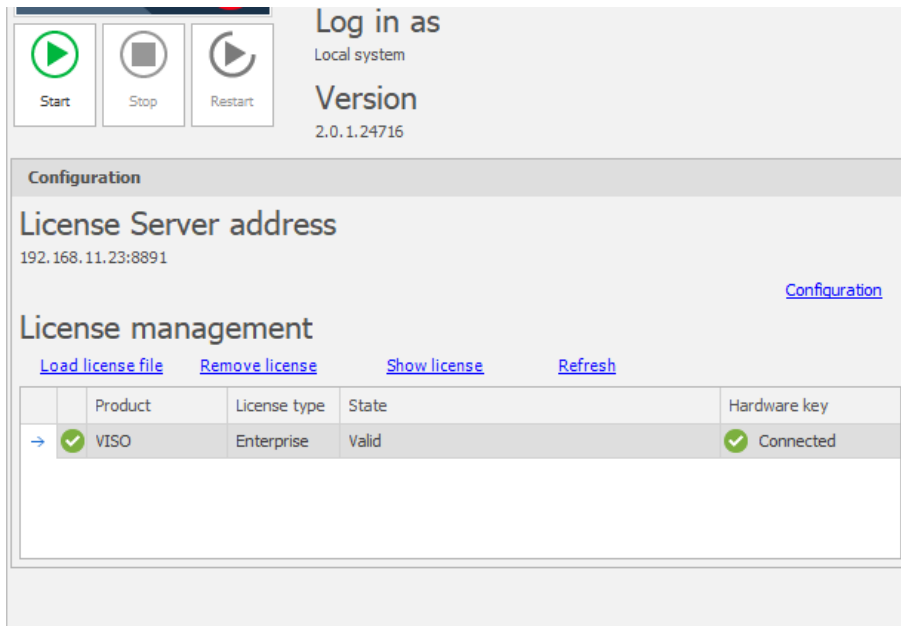
- When RogerSVC is launched then its icon is displayed in Windows tray. Click the icon . The RogerSVC icon in tray can also be launched from Windows menu *Start -> Roger -> RogerSVC*.



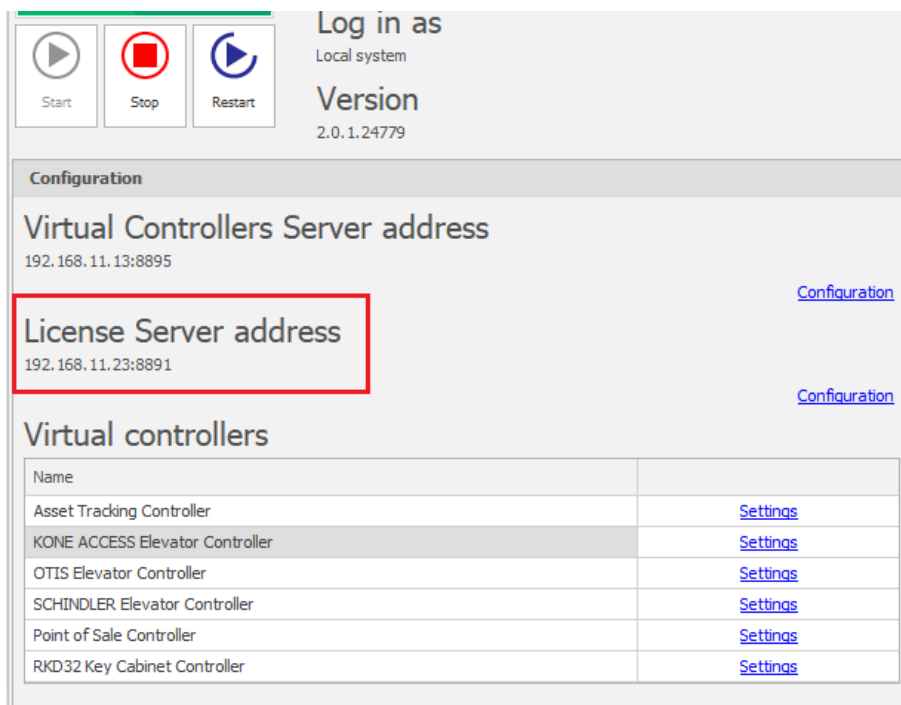
- In the RogerSVC window select *Database Connection* tile and then *Configuration* to indicate previously created RACS 5 database. Return to the main window.



- In the RogerSVC window select *Communication Server*, click *Configuration*, enter IP address of the computer with the server installed e.g. 192.168.11.13 and define port (8890 by default).
- Select *Start* and return to the main window. The server will be started and operated in the background whenever the computer is switched on even if RogerSVC window is closed.
- Connect RUD-6-LKY hardware key to USB port of computer with License Server installed.
- In the RogerSVC window select *License Server* tile, click *Configuration*, enter IP address of the computer with the server installed e.g. 192.168.11.13 and define port (8891 by default).
- Select *Load license file* and indicate purchased license file for RUD-6-LKY hardware key.
- Select *Start* and return to the main window. The server will be started and operated in the background whenever the computer is switched on even if RogerSVC window is closed.



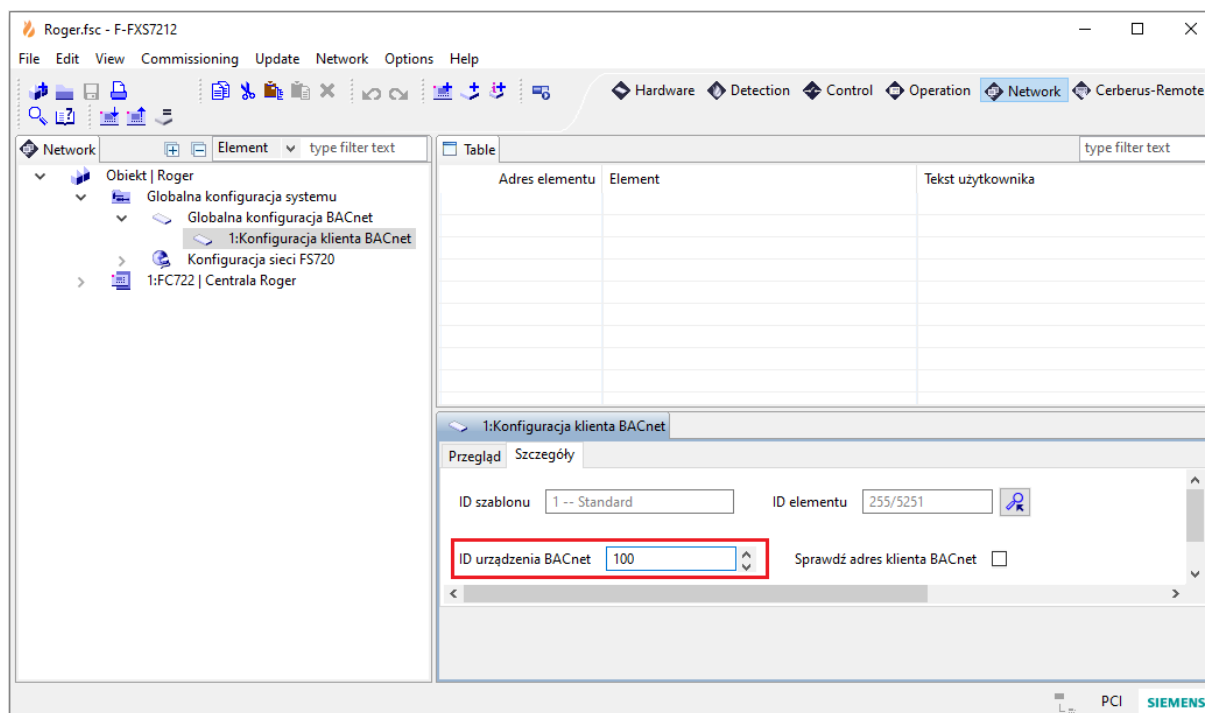
- In the RogerSVC window select *Virtual Controllers Server* tile, click *Configuration*, enter IP address of the computer with the server installed (e.g. 192.168.11.13) and define port (8895 by default).
- If contrary to previously presented configuration steps, the License Server is installed on a computer with exemplary 192.168.11.23 address while Virtual Controllers Server is installed on computer with exemplary 192.168.11.13 address then it is possible to indicate external License Server for virtual controllers as below.



- Select *Start* and return to the main window. The server will be started and operated in the background whenever the computer is switched on even if RogerSVC window is closed.
- Start VISO software, in the top menu select *System*, then *Select License Server* and indicate previously defined License Server from RogerSVC software in order to start the VISO program in licensed version.

Fire alarm system configuration

Configure the fire alarm system with Cerberus panels according to manufacturer manuals and guidelines. Additionally configure BACNet ID of the panel as it will be necessary to enter it later in order to establish connection with RACS 5 system.



Note: It is strongly recommended to operate Cerberus panels in the same local area network as computer with Virtual Controllers Server (RogerSVC software). Otherwise it will be necessary to configure UDP broadcasts between networks.

Connection with fire alarm system

In order to configure virtual controller:

- If Communication Server is not already configured in VISO software then in the navigation tree of VISO software right click *Networks* command and select *Add Communication Server*.
- In the opened window enter parameters of Communication Server previously configured in RogerSVC program and close the window with *OK* button. It is recommended to apply TLS 1.2 mode to encrypt the communication.

- In the navigation tree right click *Virtual Controllers* and select *Add Virtual Controller*.
- In the opened window enter parameters of Virtual Controllers Server previously configured in RogerSVC program and click *Connect*. It is recommended to apply TLS 1.2 mode to encrypt the communication.
- Select *CERBERUS SIEMENS Fire Panel Controller* and close the window with *OK* button. If the controller is not on the list then most probably there is license error on the level of VISO software or RogerSVC software.

- In the navigation tree of VISO software click and expand your virtual controller, double click *Siemens Cerberus Panels* command and select *Add* in the opened window.
- In the next window select *Detect* in order to fill panel parameters. Close the window with *OK* button.

Note: If fire panel is not detected properly for any reason then enter parameters manually. *Local IP Address* is the address of network adapter which is used for communication with the panel.

The image shows a software dialog box titled "Add Panel". It has two tabs: "General" and "Settings".

- General Tab:**
 - Name: Siemens Cerberus Panel_1
 - Description: (empty text area)
- Settings Tab:**
 - Panel IP Address: 192.168.11.162 (with a "Detect" button next to it)
 - Panel Port: 47808 (with a dropdown arrow)
 - Local IP Address: 192.168.11.13
 - BACNet ID: 100 (with a dropdown arrow)

At the bottom of the dialog are "OK" and "Cancel" buttons.

- Select *Initialize* and then *Run* in the opened window to download such objects as zones (groups), inputs (e.g. detectors) and outputs (e.g. sirens) defined in the fire panel.

Application of the integration

The integration mainly facilitates maintenance and monitoring of fire alarm system especially in regard of alarms. It is mainly applied in VISO SMS system which is used to monitor and visualize security systems in buildings. Fire panel objects such as detectors can be placed on Maps. More information on this subject is given in AN055 application note.

Contact:
Roger sp. z o.o. sp.k.
82-400 Sztum
Gościszewo 59
Tel.: +48 55 272 0132
Fax: +48 55 272 0133
Tech. support: +48 55 267 0126
E-mail: support@roger.pl
Web: www.roger.pl