

# Roger Access Control System 5

Application note no. 048

Document version: Rev. A

## Local and Global Commands

Note: This document refers to RACS 5 v1.6.6 or higher

### *Introduction*

Local Commands enable to start:

- Less typical functions as a result of user identification at a terminal
- Multiple functions at the same time as a result of user identification at a terminal
- Various functions at various objects as a result of Global Command activation

Global Commands enable to start groups of functions on the level of the whole system and not only within single controller. Global Commands are executed by communication service which is part of RogerSVC software. In practical applications a Global Command can be used for emergency door unlocking (as explained in AN044 application note) or multiple Alarm Zones arming/disarming (as explained in AN027 application note). Global commands can be started by:

- Schedule according to Operator defined time
- Action on event registered in the system
- Remotely by VISO software Operator

Global commands on the other hand can generate actions in the system based on:


- Remote Commands
- Local Commands

In the further part of this note it is assumed that basic configuration in regard of database, services, access controllers and typical logical objects as Access Doors and Access Points is already completed. Quick start guide for RACS 5 system is available in AN006 application note.

### *Local Commands*

Local Commands for particular functions are defined on the level of such objects of a MC16 controller as Mainboard, Access Door, Access Point, Access Zone, Alarm Zone and Automation Node. The list of available functions depends on the object where the command is defined e.g. arming and disarming functions are available only on the level of Alarm Zone.

In order to define exemplary Local Command on the level of Access Point:

- In the navigation tree of VISO software within particular access controller double click *Access Points*.
- In the opened window for already created Access Point in the bottom select *Local Commands* tab and then *Add*.
- In the next window select  to create a command.
- In the opened window name the command and close the window with *OK* button.

- Assign exemplary function *[151]: Grant Door Access with Normal Lock Pulse (detailed)* to the command. Define *Authorisation Options* in order to define the scope of Authorisations which are required by user to start the command at Access Point (reader). The minimal scope is *User authentication required* which means that command can be started by user who is defined in the system. If no option is enabled then the command can be started by any Authentication Factor (e.g. card, PIN). Close the window with OK button.
- In the bottom select *Authentication Options* tab and then *Edit*. In the tab of particular option e.g. *Normal Authentication* select *Local Command* as *Action Type* and then assign your Local Command. Close the window with OK button.


- Synchronise settings, for instance by right clicking *Networks* command in the navigation tree of VISO software.

Described above assignment of Local Command within Authentications Options shows how to define the possibility of Local Command starting by user identification with Authentication Factor (card, PIN, etc.) at Access Point (reader). In practical application such assignment is rarely used and it rather concerns functions which cannot be directly selected within Authentication Options of particular Access Points. However the Local Command can include multiple functions and in such scenario its starting at Access Point can generate multiple actions in the system at once.

In order to define multifunction Local Command which can for example be used for access granting and at the same time switch Automation Node to control lighting in the room:

- As before, on the level of Access Point define Local Command with the function *[151]* but now enable *Multifunction* option and set the limit to 2. Enable also the option *Authorisation for Object required* so individual Authorisations for functions included in the command could be later specified.

- In the navigation tree of VISO software within particular access controller double click *Automation Nodes*.
- In the opened window select *Add*, name the node and close the window with *OK* button.

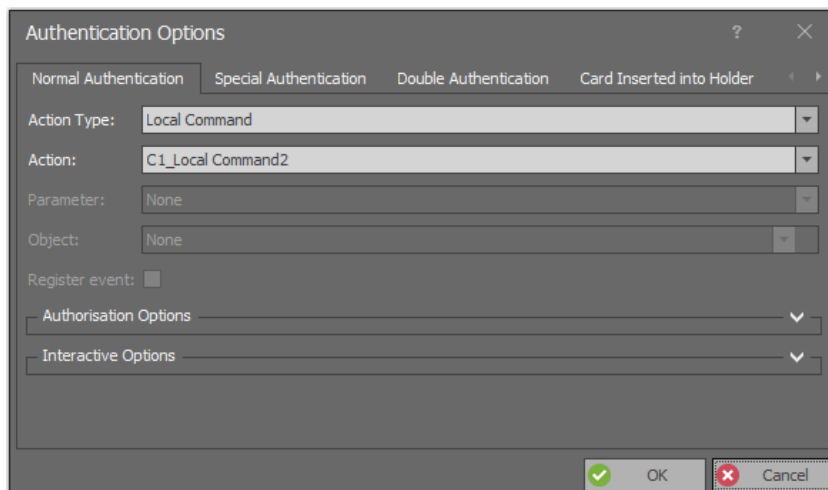
- In the bottom select *Outputs* tab and then *Add* to specify relay which will be activated by node to switch light on.
- In the opened window select  to indicate the output e.g. REL1 relay of MC16 controller and then close the window with *OK* button.
- In the opened window select the function *[021]: Node Status* so the output would reflect status of the node.

The image shows two screenshots of the 'Add Output' dialog box. The left screenshot shows the 'General' tab with fields for Name, Description, Object, Device, Label, Comment, Type, IP Address, and RS Address. The right screenshot shows the 'Triggers' and 'Modulation' tabs. The 'Triggers' tab includes fields for Priority, Triggering Method, and Pulse Time. The 'Modulation' tab includes fields for Type, Frequency, Pattern, and Number of Cycles.

- For the same node in the bottom select *Local Commands* tab and for previously created multifunction command select the function *[161]: Set Node ON Instantly*. Enable also the option *Authorisation for Object required* so individual Authorisations for functions included in the command could be later specified.

The image shows a screenshot of the 'Add Local Command' dialog box. The 'General' tab shows fields for Local Command, Function, Parametric Time, Parametric Delay, Register event, and Logic Function. The 'Authorisation Options' section includes checkboxes for User authentication required, Authorisation for Access Point required, Authorisation for Object required, and Authorisation for Function Parameter required.

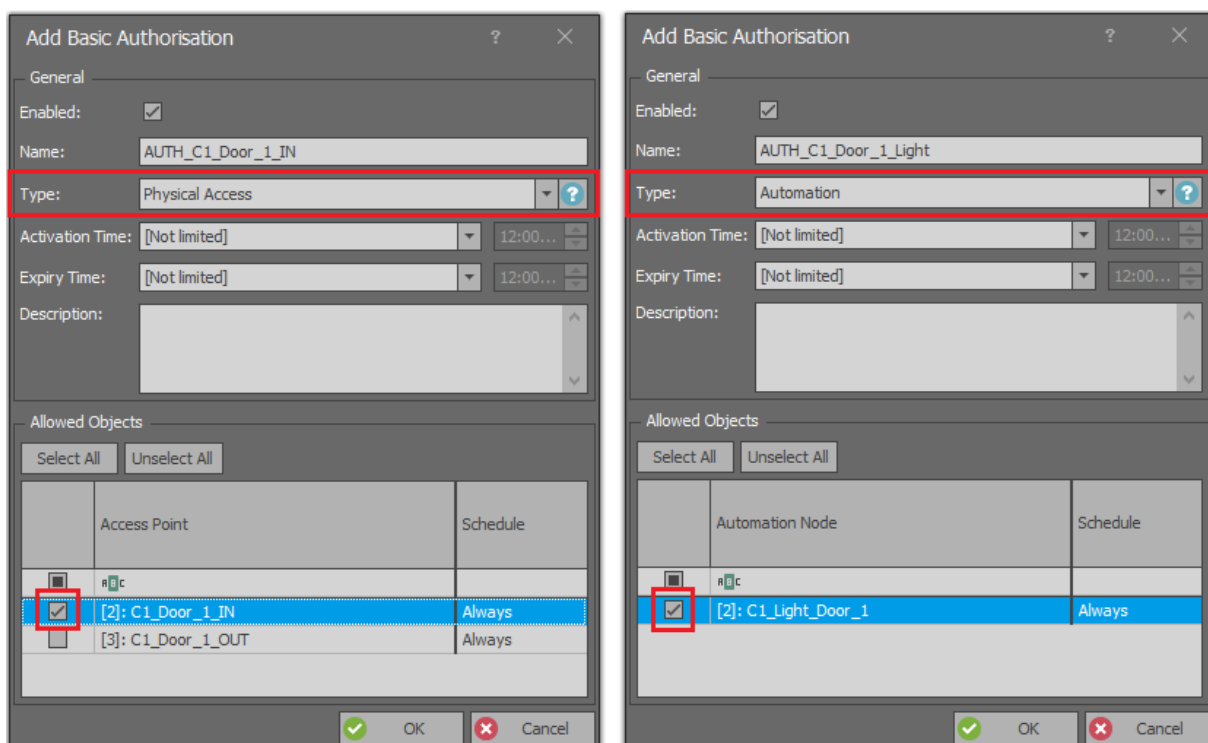
- Assign the command within Authentication Options of particular Access Point.
- Synchronise settings, for instance by right clicking *Networks* command in the navigation tree of VISO software.



Conclusively both functions can be started at the Access Point by user identification (card, PIN, etc.) if such user is assigned with proper Authorisations. It is possible to assign the user only with Authorisation for single function included in the command. In such case each Normal Authentication will start both functions of the command but only the function for which the user is authorised will be actually executed i.e. only access granting or only node (light) switching on.

Basic Authorisation or Advanced Authorisations can be defined for both functions of the Local Command. In order to define Basic Authorisations:

- In the navigation tree of VISO software expand *Authorisation* and double click *Basic Authorisations*.
- In the opened window select *Add* to define both Authorisation one after another. Both Authorisations can be limited in time by means of schedules which can be specified by selection of *Schedules* in the navigation tree of VISO software and then defining *General Purpose Maintained* type schedules.



- Assign Authorisations to user e.g. by means of Add Person Online wizard which is available after selection of *Wizards* in the top menu of VISO software.

## Global Commands

Global Commands enable to start groups of functions on the level of the whole system and not only within single controller. They can be started by schedule, event or remotely and they can trigger Local and/or Remote Commands.

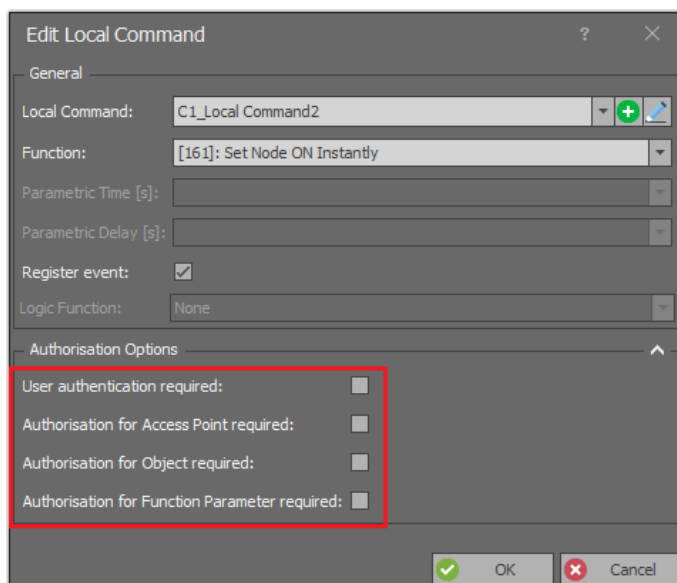
Global Commands are executed by communication service which is part of RogerSVC software.

### Commands triggered by schedules

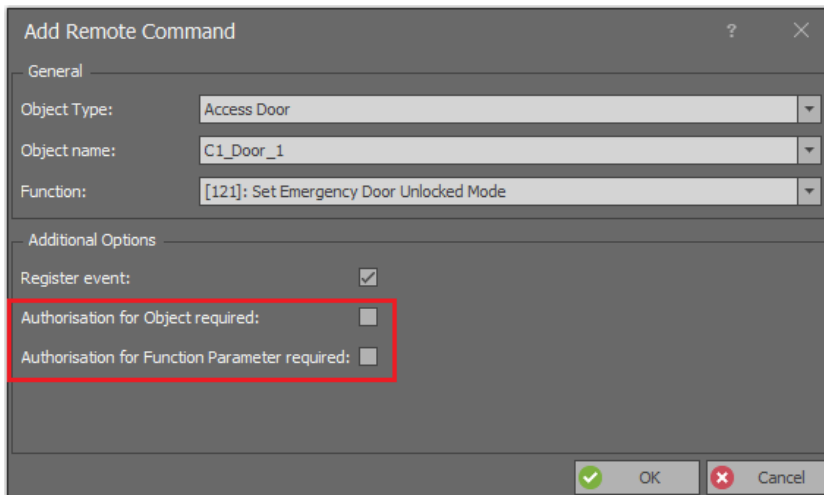
Schedule triggered command is started automatically by system at certain time. Schedule is defined weekly and is repeated every week but it is possible to define exceptions for certain days. It means that Global Command can be started for example every Monday but if exception are applied then it could be limited to the first Monday of each month.

In order to define exemplary schedule triggered Global Command:

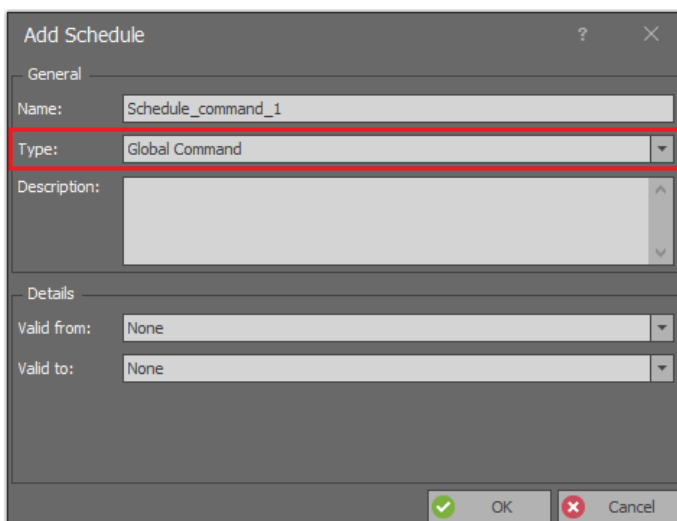
- In the navigation tree of VISO software define Local Commands in the same way as previously so they could be used within Global Command. This time do not enable any Authorisation Options.



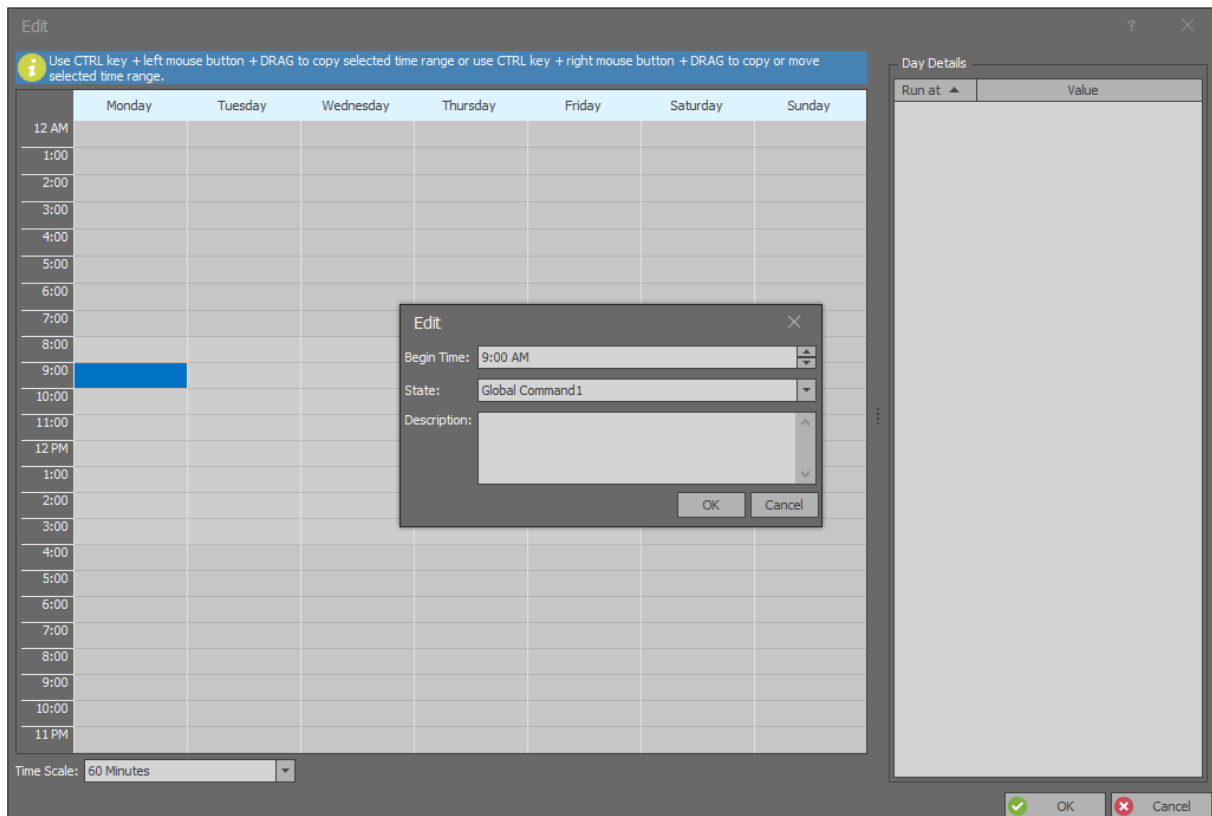
- In the navigation tree of VISO software double click *Global Commands*.
- In the opened window select *Add*, name the command and close the window with *OK* button.
- In the bottom select *Remote Commands* tab and define commands which will be triggered by the Global Command. In case of this method *Additional Options* are irrelevant.



- Then select *Local Commands* tab and assign Local Commands which will be triggered by the Global Command.
- In the navigation tree of VISO software double click *Schedules*.
- In the opened window select *Add*, name the schedule, select *Global Command* type and close the window with *OK* button.



- In the bottom select *Week Days* and then *Edit*.
- In the opened window right click within particular day and then select *Add Event*.
- In the next window define your time and select particular Global Command. Close both windows with *OK* button.



- Synchronise settings, for instance by right clicking *Networks* command in the navigation tree of VISO software.

In order to limit the schedule to certain dates in a year instead of periodic weekly repeating, select *Exceptions* tab in the bottom. Exceptions are defined by selection of date, period or calendar which is list of dates defined by selection of *Calendars* in the navigation tree of VISO software. On selected dates, the schedule functions as defined by exceptions.

### Commands triggered by events

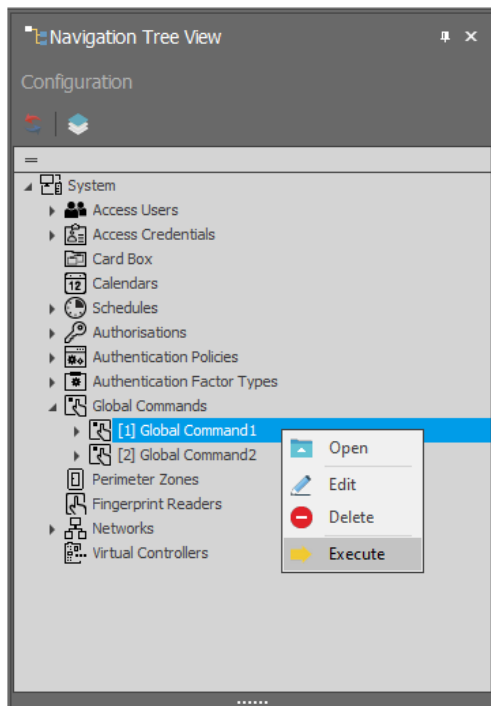
Event triggered command is started when certain event is registered in the system. Predefined events and administrator defined events can be used for commands. In RACS 5 it is also possible to define the method to generate events. The selection of event type and action which can be Global command triggering is available after selection of *Event Log* in the top menu of VISO software and then *Event Types*.

Configuration examples for Global commands triggered by events are given in AN027 and AN044 application notes where they are used for global arming and disarming of Alarm Zones and for global emergency door unlocking.

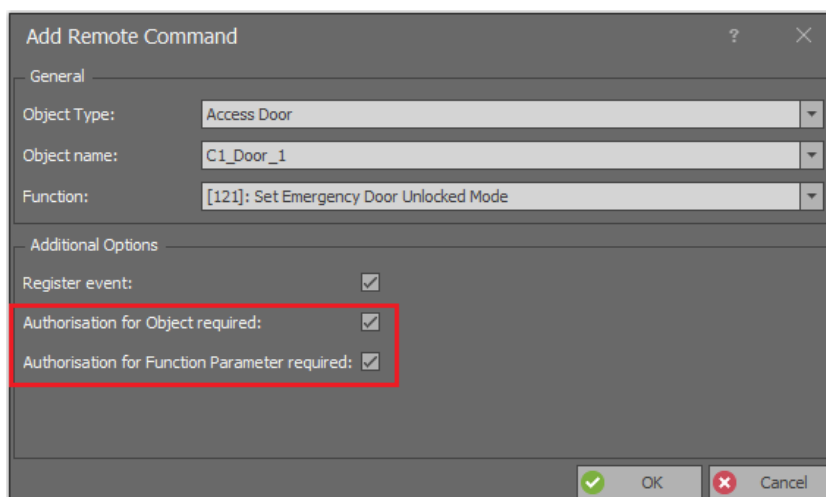
### Commands triggered remotely

Global commands can be started by system Operator from the navigation tree of VISO software. It is also possible for Operator to start individual Remote commands from tree or map. The benefit of using Global commands is such that multiple Remote commands and Local commands which are included in the Global command can be started at once.





Remote command can be started by system Operator if such Operator is assigned with proper Authorisation(s). This is defined by association of Operator with Access Person whose Access Credential is assigned with adequate Authorisations for functions and objects. More information of Operator Authorisations is given in AN040 application note. In case of Remote command which is included in Global command it is also possible to enable its starting only by Operators with proper Authorisations. In such case options which are shown below must be enabled when Remote command is defined for Global command.



**Contact:**  
**Roger sp. z o.o. sp.k.**  
**82-400 Sztum**  
**Gościszewo 59**  
**Tel.: +48 55 272 0132**  
**Fax: +48 55 272 0133**  
**Tech. support: +48 55 267 0126**  
**E-mail: [support@roger.pl](mailto:support@roger.pl)**  
**Web: [www.roger.pl](http://www.roger.pl)**