

Roger Access Control System 5

Application note no 032

Document version: Rev. A

Card designing and printing

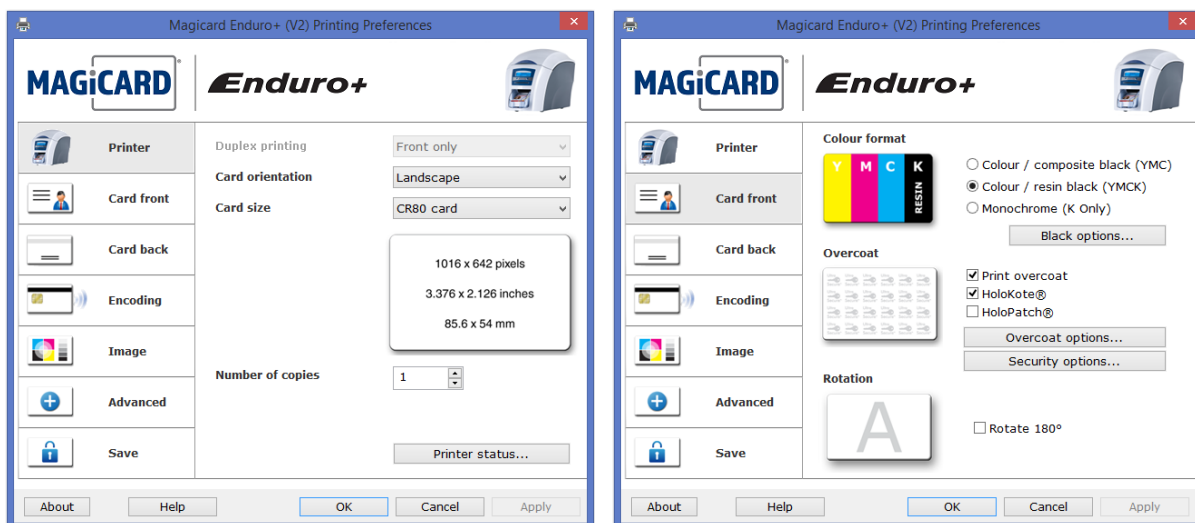
Note: This document refers to RACS v5.5 (VISO 1.5.2 or higher)

Introduction

RACS 5 system within VISO software enables card templates designing and printing on proximity cards conforming with format ID-1 (85,6 x 54 mm) of ISO/IEC 7810 standard. The other commonly used name for this type of cards is CR80. VISO software can operate with card printers of such manufacturers as for example Zebra, MagiCARD or Datacard.

Card printer configuration

Install your card printer on computer according to manufacturer guidelines. Configure the printer in regard of card size, card orientation and printing options. Typical settings for MAGiCARD printer are shown below.



Card template

Card template creating

The template enables to design layout with custom graphic elements for printing. Multiple card templates can be configured and selected in VISO software according to individual requirements. In order to create a template:

- In the top menu of VISO software select *Tools* command and then *Card Printing Templates* icon.

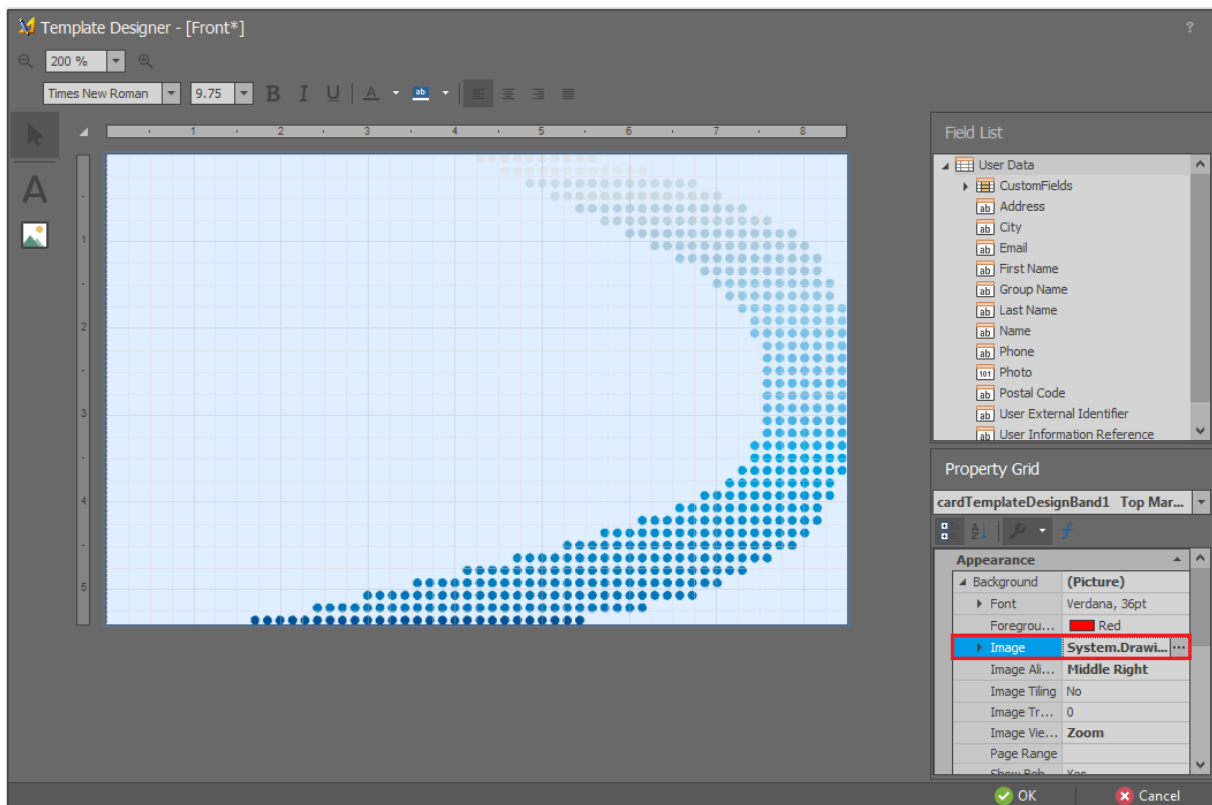
- In the opened window select *Add* button, name the template and select card orientation (horizontal or vertical).
- In the bottom select *Template Designer* button.
- In the opened window design the template selecting required elements.

Card template designing


The template can include constant content elements such as background, logo, text, etc. and variable content elements which are individual for selected users i.e. first and last name, group, etc.


Background

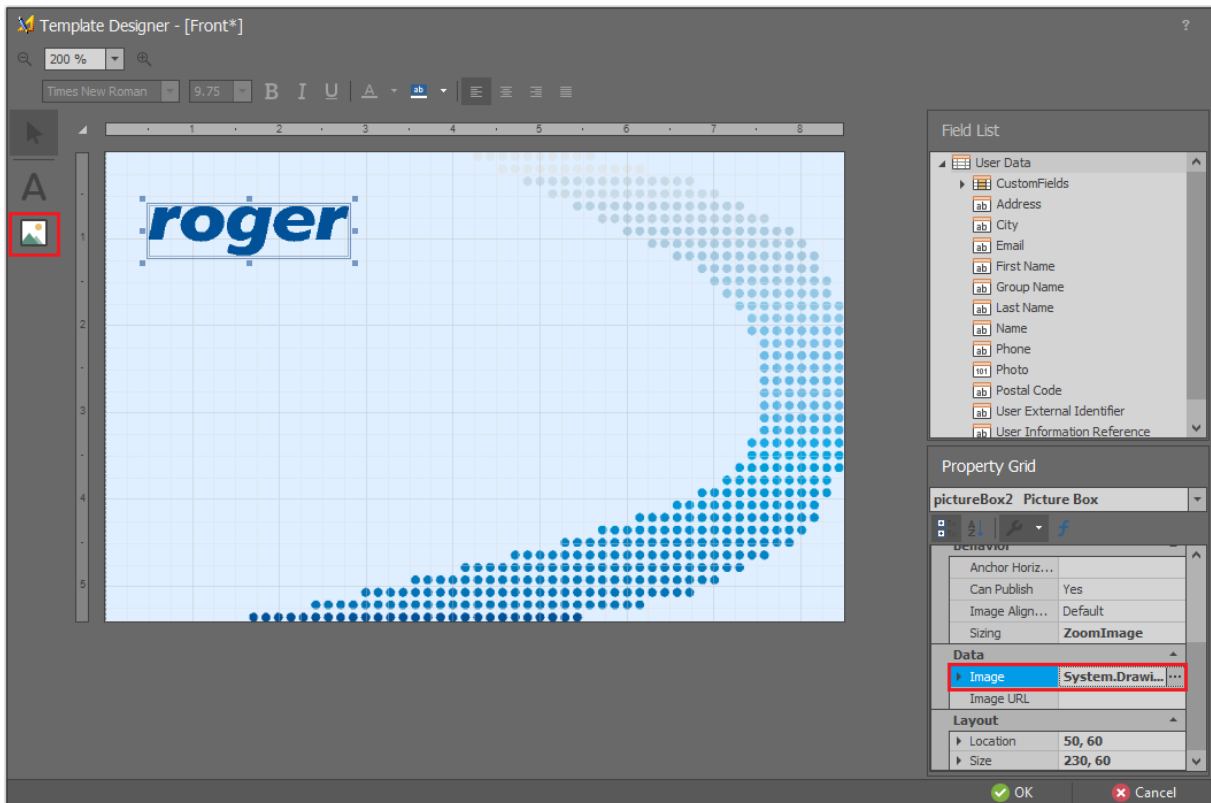
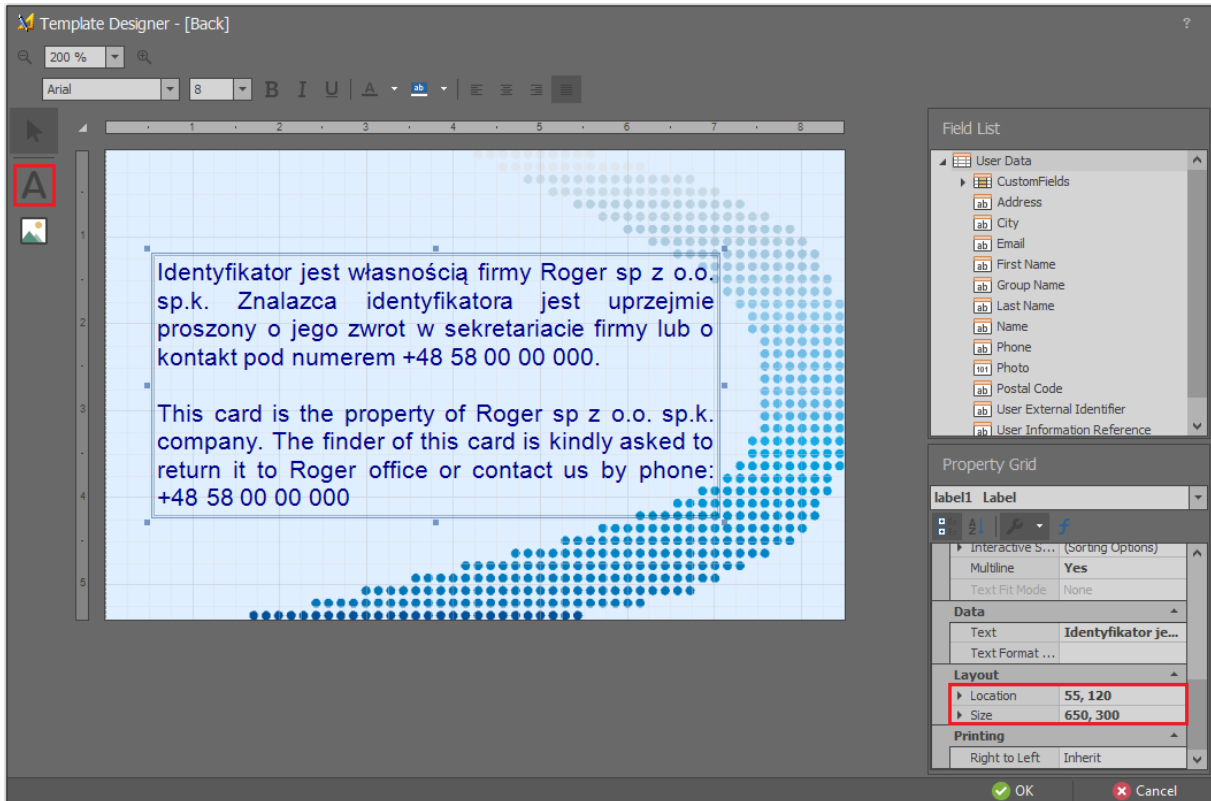
Click card area, in *Property Grid* area expand the command *Background* and select *Image* field to indicate file already created in a graphic design software in *.bmp, *.jpg, *.png or other format. Other parameters such as transparency, alignment etc. are configured in *Property Grid* area.



Constant content elements

In case of constant text select the icon , indicate the location in template area and enter your text. Additional formatting and detailed location can be defined in *Property Grid* area. The total template area is 850 x 540. The 0,0 point of coordinate system is in the top left corner and the location of each element is defined for its top left corner.

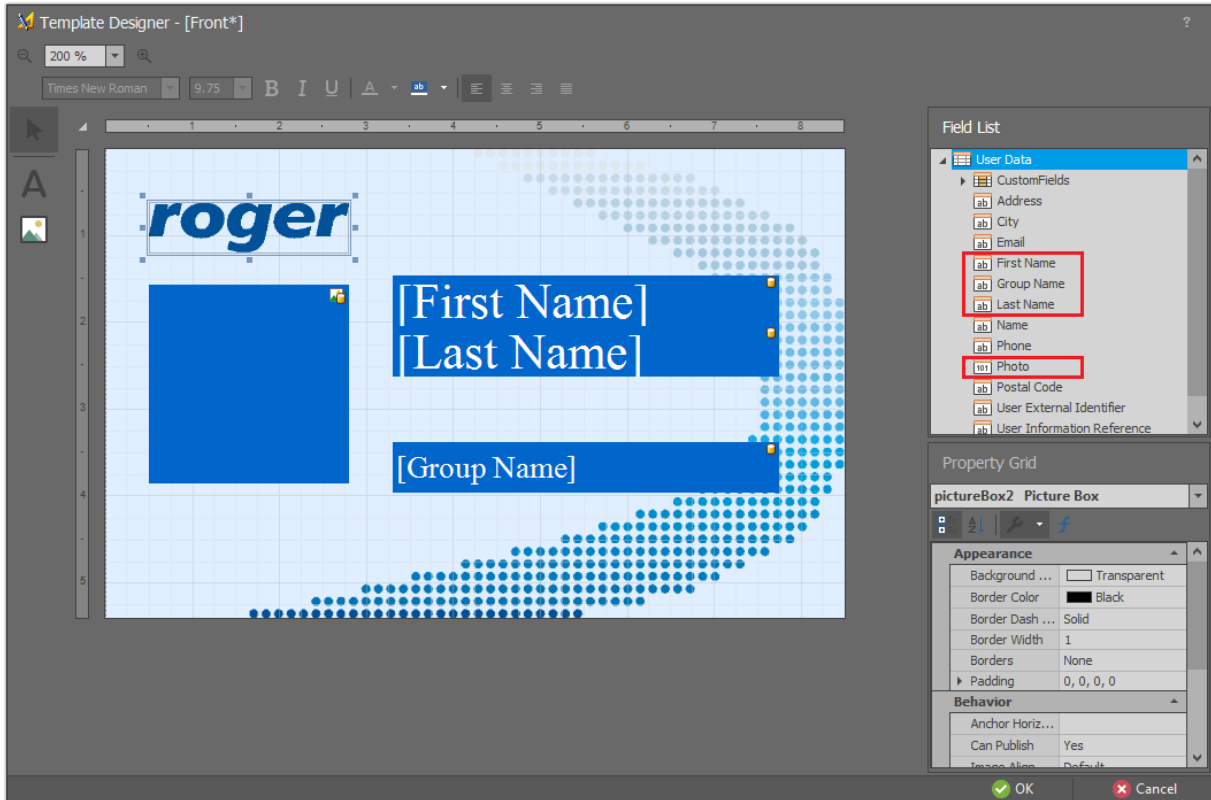
In case of constant image select the icon , indicate the location in template area and select image file in *Image* field. Additional formatting can be done in *Property Grid* area. The image can be centred, stretched, zoomed, etc. in *Sizing* field.



Predefined variable content elements

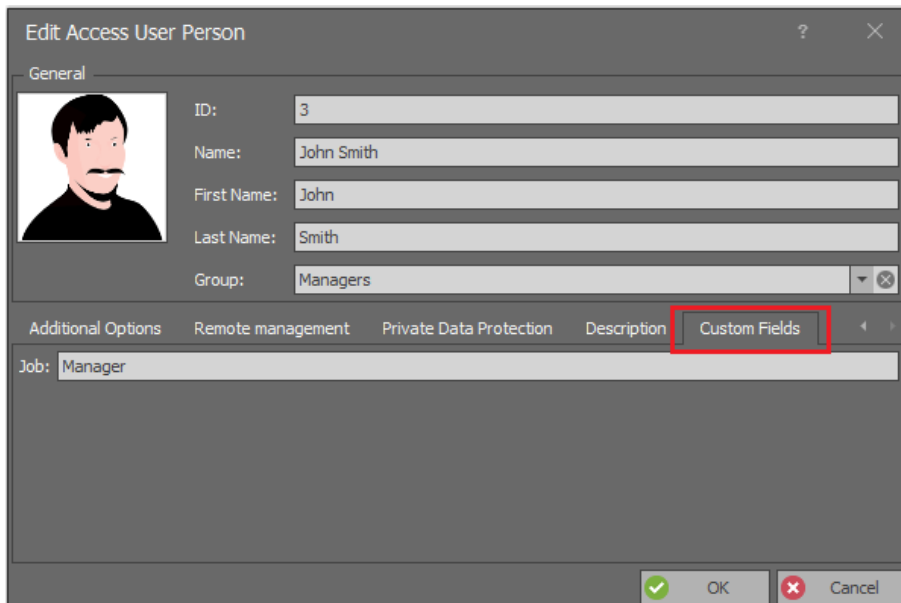
Variable elements change their content based on the user for whom card is printed. The examples of such elements are first and last names, photo (preferable in 1:1 proportions), etc. In order to place last name on card template drag and drop *Last name* element from *Field List* area. When card is printed then variable elements are filled with data entered when user is created/edited. In

case of photo it is recommended to select *StretchImage* option in *Sizing* field in *Property Grid* area to ensure proper scaling of the photo.

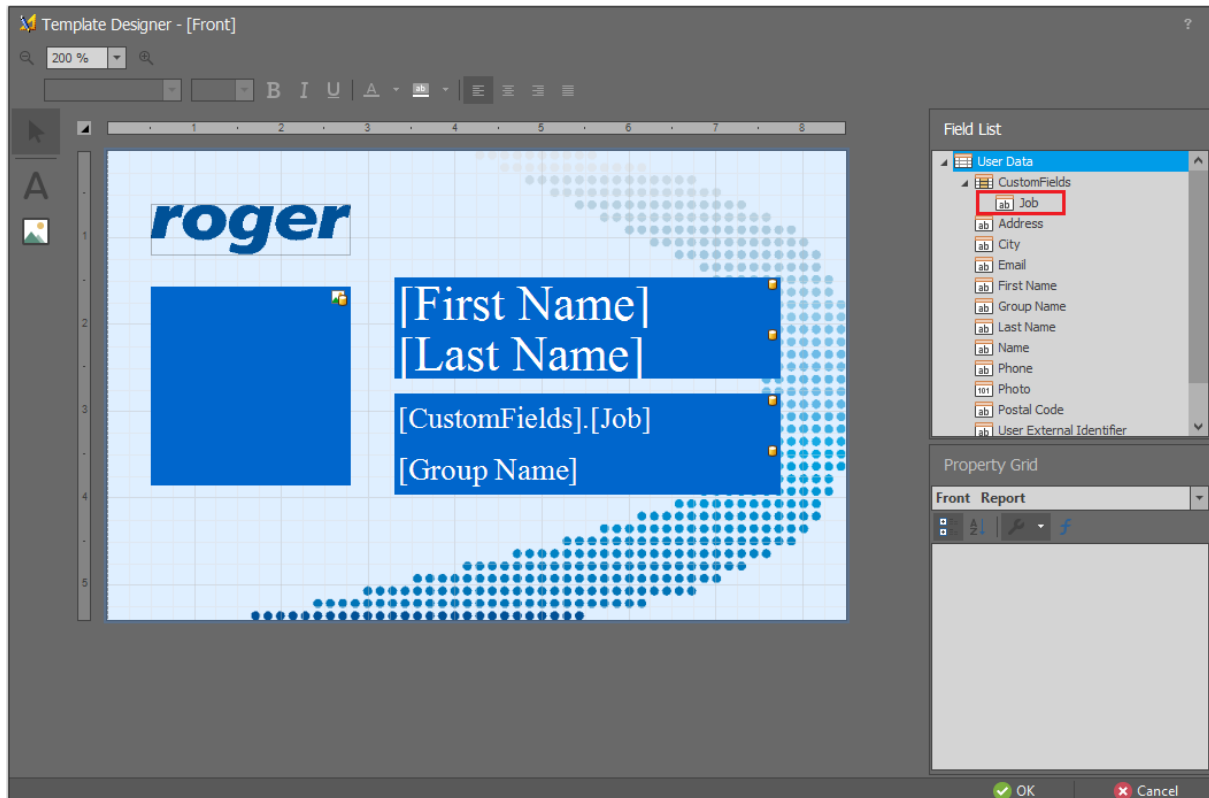


Customized variable content elements

In case of Access User Persons in VISO software there can be defined and filled customized fields such as for example job. Such fields are defined by selection of *Tools* command in the top menu of VISO software and then *Access Person Custom Fields* icon. The field can be filled in the properties of user in *Custom Fields* tab.



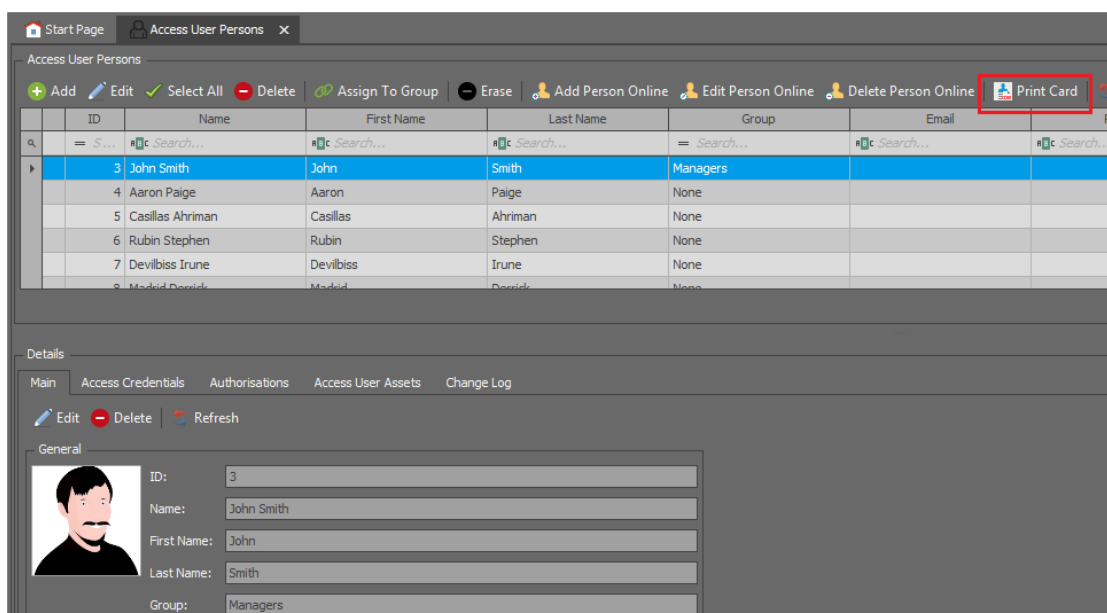
Customized variable elements can be applied in card template when *CustomFields* command is expanded in *Field List* area and selected elements are dragged and dropped into template area.



Card printing

Cards can be printed for all types of users i.e. Persons, Visitors and Assets. In order to print card template for particular user:

- In the top menu of VISO software select *Configuration* command and then *Access User Persons* icon.
- In the opened window select any user and then *Print Card* command.
- In the next window select one of previously created templates and then *OK* button.
- In the opened window select printer and confirm with *OK* button.



Contact:
Roger sp. z o.o. sp.k.
82-400 Sztum
Gościszewo 59
Tel.: +48 55 272 0132
Fax: +48 55 272 0133
Tech. support.: +48 55 267 0126
E-mail: support@roger.pl
Web: www.roger.pl