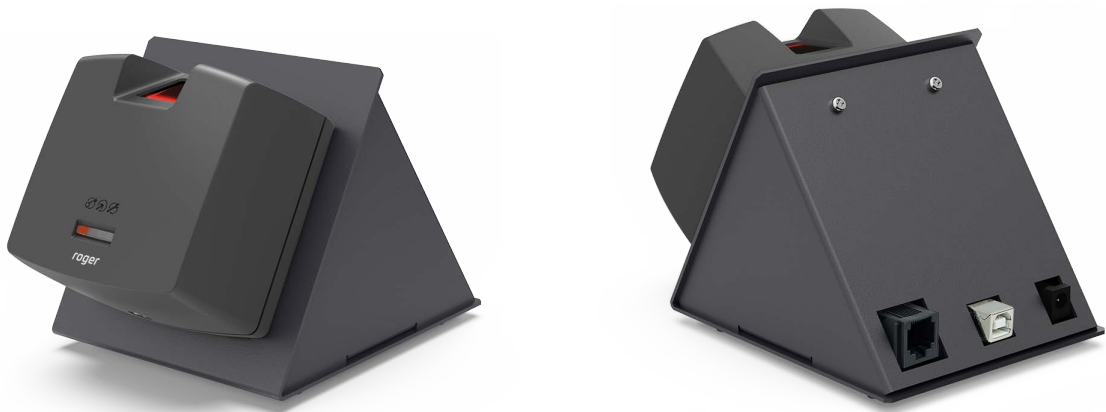




RFT1000-ADM is a form of RFT1000 reader mounted on a metal desktop housing and intended for use as a system reader. Using the reader, system administrator can enter both fingerprints and MIFARE® proximity cards into the system database. Communication with the reader is possible only via Ethernet network. The reader is delivered with power supply.



Ordering guide

Item

Description

**RFT1000-ADM**

Access system administrator reader; fingerprint and MIFARE Ultralight/Classic/DESFire/Plus card reader; metal desktop enclosure

Legal Notice

This document is not intended to be a technical specification of the product and has informative character only. The Manufactures of product reserves right to change its characteristic without notice. The product features listed in this document refer to the entire series and depends on particular product version, configuration and additional equipment.

RevC © 2023 Roger sp. z o.o. sp. k. All rights reserved.  
This document is a subject to the Terms of Use in their current version published at the [www.roger.pl](http://www.roger.pl)

Roger sp. z o.o. sp. k.  
Gościszewo 59  
82-400 Sztum  
Poland

**T.** +48 55 272 0132  
**F.** +48 55 272 0133  
**E.** [roger@roger.pl](mailto:roger@roger.pl)  
**I.** [www.roger.pl](http://www.roger.pl)

**roger**