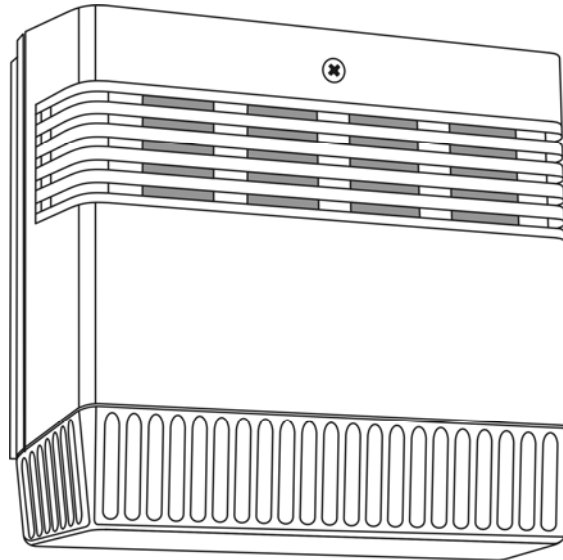


**ASP110LC v1.0**  
**Outdoor Alarm Siren**  
**With Strobe Light**



### General Description

ASP110LC siren is designed for use in burglary alarm system or other situations which require acoustic and light signaling method. The ASP110LC siren utilizes piezoelectric transducer and electric light bulb. The ASP110LC produce up to 110dB sound level with few selectable modulation tones and pulsed (1-2 Hz) alarm strobe light. The entire siren case (body) is manufactured from the white high-impact polycarbonate (PC LEXAN) or from the grey ABS polycarbonate (PC ABS). The strobe light cover can be delivered in red, blue or amber color, if required light cover can be easy replaced by the installer. In order to increase the overall mechanical robustness of the siren the metal protection cover made from the 1.5mm thick stainless metal sheet can be optionally installed inside the siren compartment. The electronic module of the siren is fully potted thus protected from a moisture and corrosion.

### Triggering Methods

The triggering of a sound and light alarm is achieved through connection of the power supply to relevant connection terminals (screw terminals). Always make sure if the output signal used to trigger siren's sound or light is capable to provide enough of power (adequate supply current and voltage). The triggering method allow to activate signaling either by applying supply plus or minus to the relevant inputs of the siren.

### Tamper

The ASP110LC is equipped with a tamper detection circuit based on the hermetic (IP67) isolated contact 24V/50mA rated. Normally, when siren is installed and case is closed the TAMPER contacts are closed, they become open in the following situations:

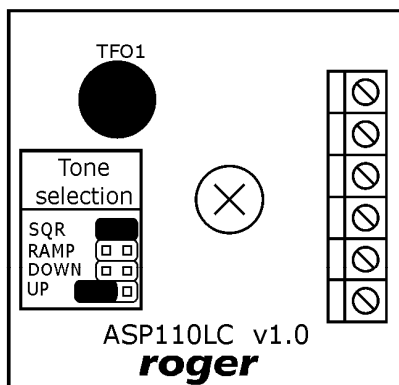
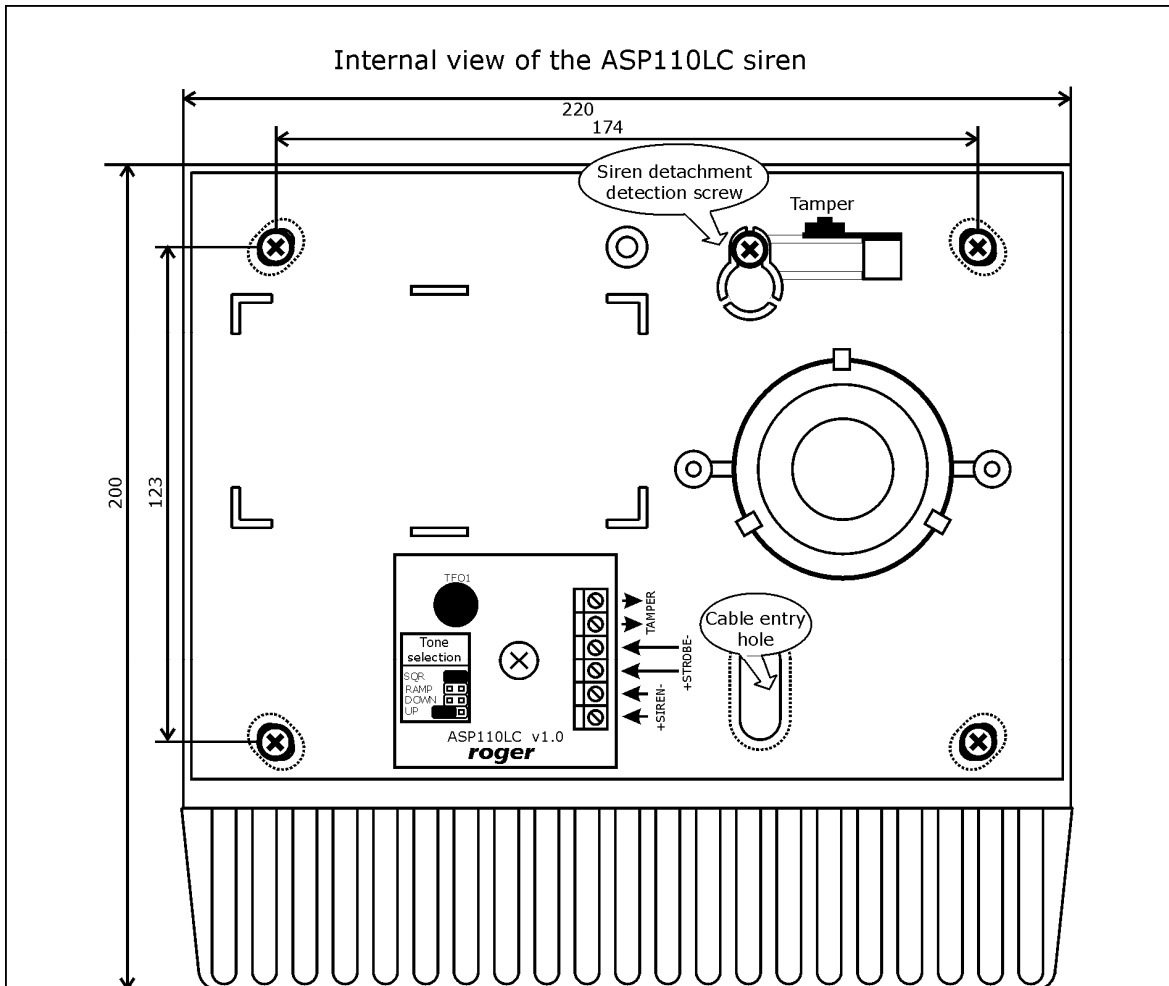
- when siren case is being opened
- when siren case is being pulled off from its place of installation (wall)

### Installation

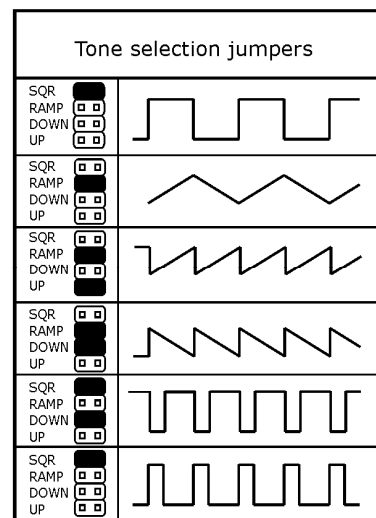
Siren should be fixed firmly on the vertical piece of construction (wall) using 5 screws (delivered together with the siren) with strobe light directed towards a ground. The four

screws are used to fix siren bottom to the wall, the fifth one is used for tamper detection in case when siren is being detached from the place of installation.

Note: Always provide adequate wires for siren sound and light triggering inputs. Assure, that the max. resistance of supply cable used to trigger sound or light is not higher than 5 Ω.



Connection terminals and tone selection jumpers



# ASP110LC

**TECHNICAL SPECIFICATION**

Parameter	Value
Supply voltage	10.0 - 15V DC, nominal 13.8VDC Note: Gradually, with lowered supply voltage both siren sound and light will decrease their strength as well
Current consumption	<ul style="list-style-type: none"> <li>▪ standby 0mA</li> <li>▪ strobe light average current app. 250mA</li> <li>▪ strobe light momentary current app. 500mA</li> <li>▪ siren average current app. 200mA</li> </ul>
Alarm signal frequency	1500...4000Hz (modulated)
Sound level	110dB at 1 meter @ 13.8V DC
Light indication	5W (pulsed 1-2Hz)
Operating temperature	-35°C - +60°C
Relative Humidity	0 - 95%
Dimensions	220 X 205 X 80
Weight	0.61kG

**Ordering Codes**

ASP110LC	White color polycarbonate (PC) plastic case, red light, without internal metal cover
AS-OM	Internal metal protection cover for ASP siren made from 1.5mm thick stainless steel
AS-KG	Dark blue light cover
AS-KB	Amber (orange) light cover
Other siren and light colors for individual request	

**Product History**

Hardware	Firmware	Date	Description
V1.0	Not applicable	02/12/09	Initial product version



The symbol of a crossed-through waste bin on wheels means that the product must be disposed of at a separate collection point. This also applies to the product and all accessories marked with this symbol. Products labeled as such must not be disposed of with normal household waste, but should be taken to a collection point for recycling electrical and electronic equipment. Recycling helps to reduce the consumption of raw materials, thus protecting the environment.

**Contact**

Roger sp. j.

82-416 Gosciszewo

Gosciszewo 59

Tel.: +48 55 272 01 32

Fax: +48 55 272 01 33

Technical support PSTN: +48 55 267 01 26

e-mail: [suport@roger.pl](mailto:suport@roger.pl)