

*Roger Access Control System*

## Metal Enclosure ME-40

### Operating Manual

*Product version: v1.0*

*Firmware version: -*

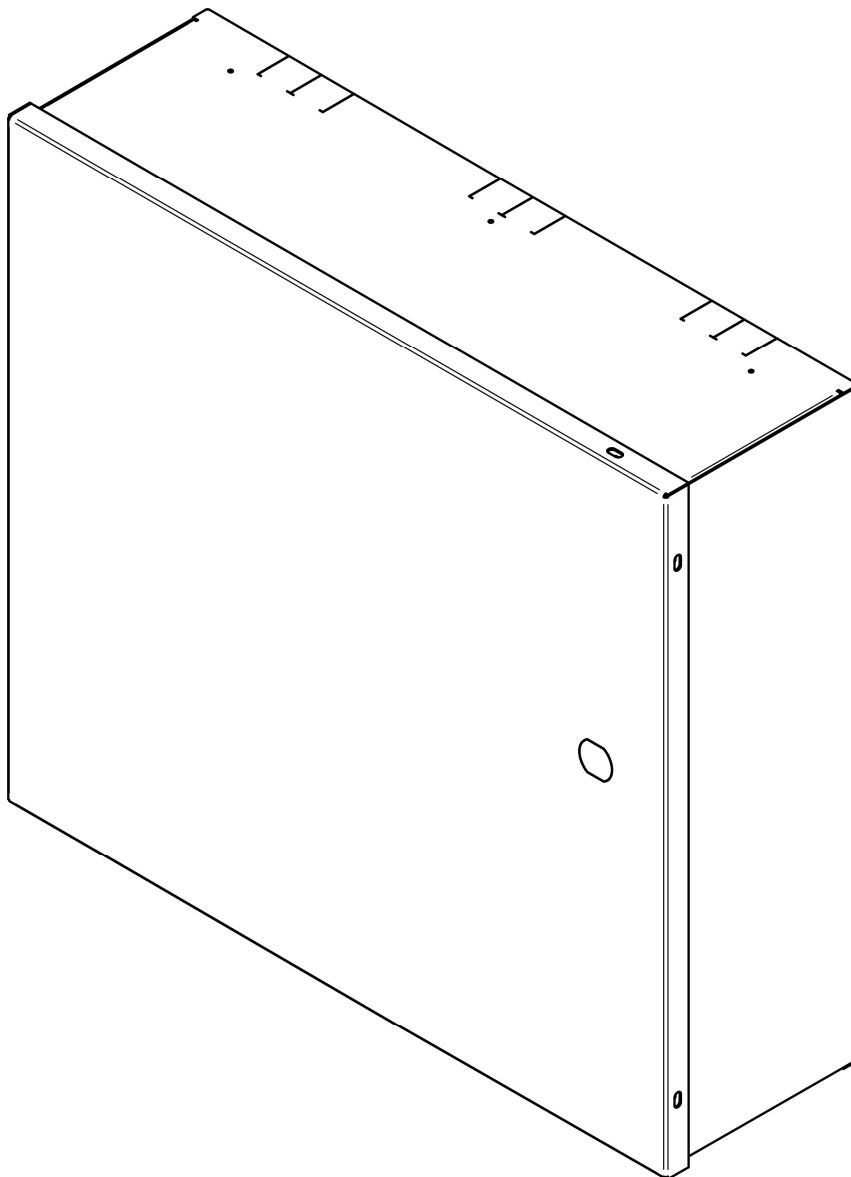
*Document version: Rev. C*

**RoHS**

**CE**



**IP20**



ATPP-447

## 1. APPLICATION

The ME-40 enclosure is dedicated to RACS 5 modules and devices which require installation on DIN rail along with a 17Ah battery. The enclosure is equipped with 1 DIN rail tamper contact and main fuse switch. Access to the internal space of the enclosure is protected by a door fixed by screws. Optionally, the door can be equipped with a key lock. The ME-40 is made of a metal sheet painted with an anthracite grey powder coating.

## 2. INSTALLATION

1. The enclosure shall be installed indoors ensuring nominal environmental conditions as stated in the *Specification* section of this document.
2. All installation and maintenance work inside the enclosure shall be done with the 230VAC power supply disconnected.
3. 230VAC power supply should be made with a three-wire cable including green-yellow PE wire.
4. Mains power supply cable shall be fed into the enclosure through hole B and fastened to G detail by a cable tie.
5. Connect the mains power cable as shown in the figure below (Fig. 1).

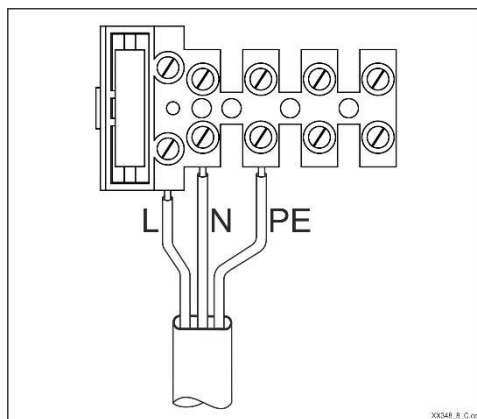






Fig. 1 Connection of 230VAC mains power to the terminal block

6. Protective wire M connected to the terminal block A, should be connected to the F connector of the anti-shock protection PE located on the enclosure door (Fig. 2).
7. Other connections should be made in accordance with the instructions of the devices to be mounted in the housing. Connection cables for installed devices must be fed into the enclosure through C holes.
8. In order to arrange the cables inside the enclosure, they should be placed with cable ties to the G detail. In order to use the G details, they must be levered first (ex. with a screwdriver) and bend to the vertical position, then use a cable tie to fasten the bundle of cables (Fig. 3).
9. Configuration and adjustments of the modules installed in the enclosure should be done in accordance with their manuals.
10. To introduce cables beneath the enclosure from the upper or lower wall of the enclosure, form the cable holes as indicated in Fig. 4.
11. Close the enclosure when electrical installation and configuration/test process is accomplished.
12. Users of the system should be familiarized with the rules of switching off the electrical circuit used to power the device.

	<p style="text-align: center;"><b>Caution</b></p> <p><b>The installation can be done by qualified person only and with all necessary certificates concerning connection and maintenance of 230VAC and low voltage networks.</b></p>
	<p style="text-align: center;"><b>Caution</b></p> <p><b>It is forbidden to use the enclosure without properly assured and operational protective earthing.</b></p>
	<p style="text-align: center;"><b>Caution</b></p> <p><b>System earthing must be performed carefully, properly and effectively.</b></p> <p><b>It is forbidden to use PSU/transformer without properly performed electric shock protection.</b></p>
	<p style="text-align: center;"><b>Caution</b></p> <p><b>Follow the instructions in the manual and/or data sheet.</b></p> <p><b>Failure to do so may result in equipment damage, electric shock, fire, injury, or other consequences.</b></p>

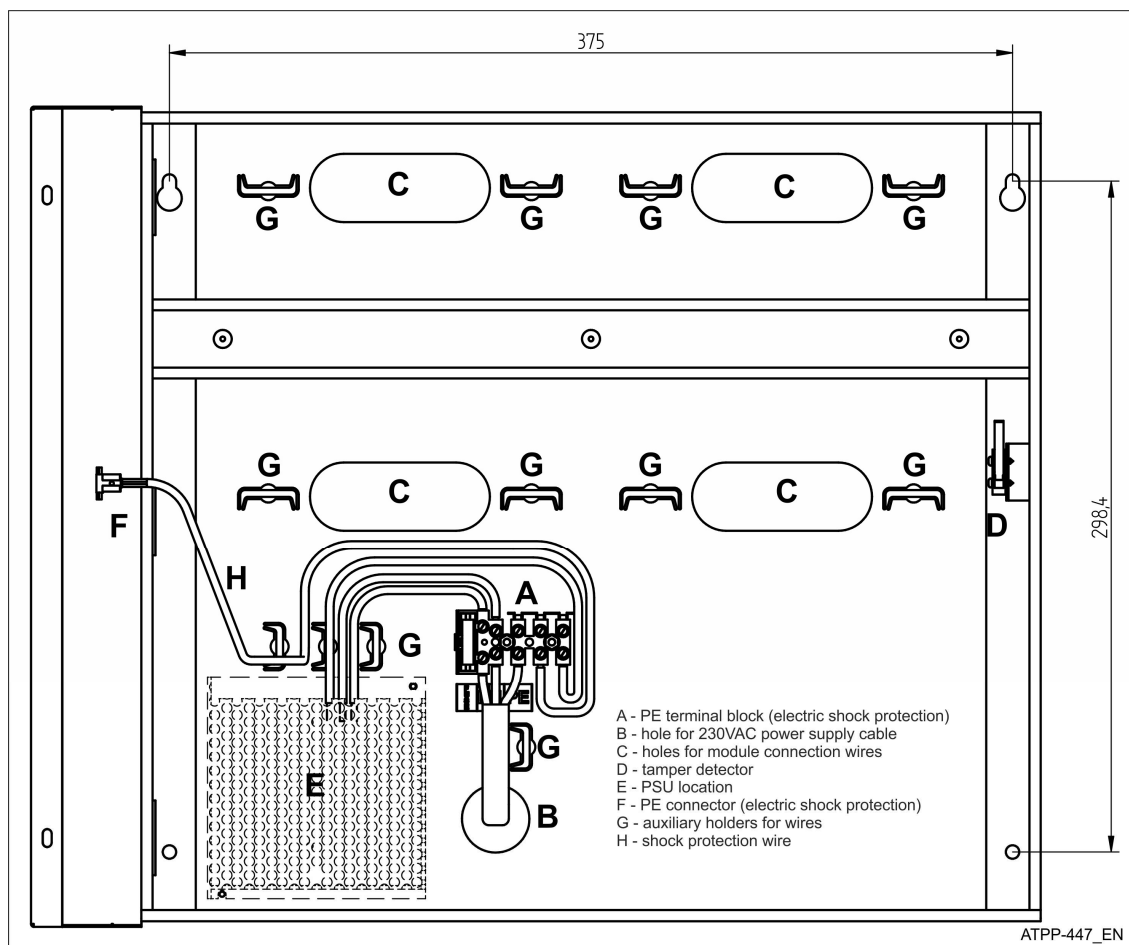


Fig. 2 Internal view of ME-40 enclosure

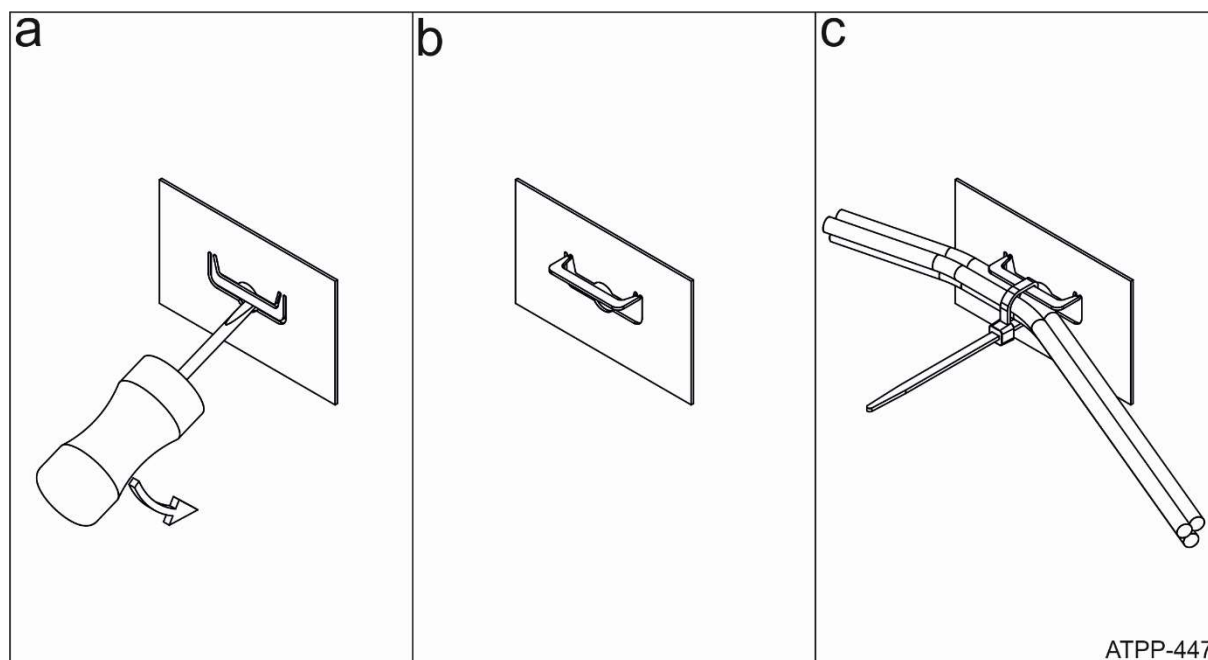


Fig. 3 Cable fixing method

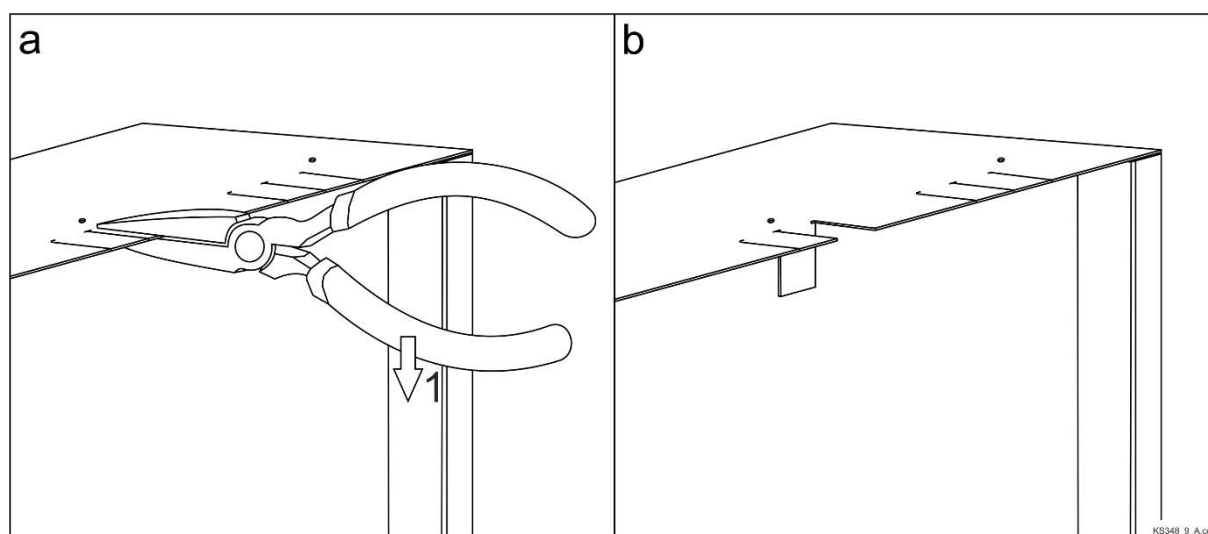


Fig. 4 Forming a cable entry hole in the bottom or top wall of the enclosure

### 3. SPECIFICATION

Parameter	Value
Electric Protection	Fused terminal block 5A/250V
Tamper Protection	Tamper contact NO/NC; 50mA/50VDC
DIN Rail	2 × 396mm
Material	Metal sheet 0,8mm; anti-corrosion protection
Colour	Anthracite grey RAL7016MAT
Battery	Space for 17Ah battery


Environmental Conditions	Indoor general conditions, relative humidity up to 90%; temperature -10°C to +40°C
Ingress Protection	IP20
Internal Dimensions (HWD)	398×358×100mm
External Dimensions (HWD)	405×365×121mm
Weight	3,4kg
Compliant	CE; RoHS

#### 4. ORDERING INFORMATION

Product	Description
ME-40	Standard version of the product

#### 5. PRODUCT HISTORY

Version	Date	Description
ME-40 v1.0	07/2023	The first commercial version of the product

	<p>This symbol placed on a product or packaging indicates that the product should not be disposed of with other wastes as this may have a negative impact on the environment and human health. The user is obliged to deliver equipment to the designated collection points of electric and electronic waste. For detailed information on recycling, contact your local authorities, waste disposal company, or point of purchase. Separate collection and recycling of this type of waste contributes to the protection of the natural resources and is safe for human health and the environment. Weight of the equipment is specified in the document.</p>
--	---

#### Contact:

**Roger sp. z o. o. sp. k.**  
**82-400 Gościszewo 59**  
**Tel.: +48 55 272 0132**  
**Fax: +48 55 272 0133**  
**Technical Support: +48 55 267 0126**  
**E-mail: [support@roger.pl](mailto:support@roger.pl)**  
**[www.roger.pl](http://www.roger.pl)**